

FREE

THE EXTRA MILE

SCOTLAND'S ADVENTURE COAST

Special Edition - A feature on
Argyll & The Isles Post-Lockdown 2020



TAKE IT
& KEEP IT

Share the trips,
not this mag





The Great Outdoors



Set in a beautiful part of Argyll, less than 60 miles from Glasgow, this striking destination has so much to offer. With something for everyone, from wellbeing treatments to mountain biking, a visit to Portavadie is the perfect break.

For seasonal short break packages and offers visit www.portavadie.com

- 4 and 5 star Accommodation
- Restaurants and Bars
- World Class Marina
- Meetings and Events
- Weddings
- Retail Therapy
- Bike Hire
- New for 2020: Motorhome/RV
- New for 2020: Camping
- Children's Play Area
- Award winning Leisure & Spa Experience

SPECIAL EDITION GOING THE EXTRA MILE

Welcome to this one-off publication celebrating places to go, things to see and all the natural beauty that Argyll and the Isles has to offer. Sit back, relax and get ready to be inspired of where to go for day trips, short breaks and longer staycations, all here on your doorstep.

STAYCATION
{A vacation spent close to home, involving day trips and breaks away.}

STAYARGYLL
{A vacation spent close to home, involving day trips and breaks away surrounded by water, natural beauty, wildlife, heritage, fresh produce and friendly banter. In the format of vast mainland landscapes to islands of all shapes and sizes.}

Mark Beaumont pictured at the peak of the Cobbler in the Arrochar Alps as part of our 2016/17 Wild About Argyll campaign. Image taken 4 years ago, and rock face ready for your pic today. Have you been brave enough to thread the needle?

14
OBAN & LORN

18
INVERARAY, KNAPDALE,
KILMARTIN & CRINAN

22
KINTYRE & GIGHA

24
COWAL

28
BUTE

30
LOCH LOMOND &
CLYDE SEA LOCHS

36
ISLAY, JURA &
COLONSAY

38
MULL & IONA

40
COLL & TIREE

- 4 Welcome
- 5 Argyll & The Isles Map
- 6 Going The Extra Mile For Our Visitors
- 8 About AITC
- 12 Great Days Out
- 27 Going The Extra Mile With Our Communities
- 32 The Argyll Trilogies
- 42 Chatting With Our Visitors
- 46 Going The Extra Mile With Our Businesses
- 48 Taste Of Place Trails
- 50 Going The Extra Mile With Events
- 52 Responsible Tourism
- 53 Shop To Sail
- 54 Agritourism
- 56 Bike Packing Trail
- 58 Nature's Paradise
- 62 Long Distance Trails
- 64 Castles & Monuments
- 68 On Our Doorstep



GOING THE EXTRA MILE FOR OUR VISITORS, COMMUNITIES & BUSINESSES...

"A warm welcome to Argyll and the Isles. With a geography covering 6,900 sq km and a population of nearly 87,000, this is the second largest region in Scotland encompassing over 3700km of coastline, 23 inhabited islands, major towns and tiny villages with direct easy access transport links to the central belt.

What better place to explore and seek out new adventures, than here on your doorstep? We are so proud that local residents, communities and businesses are actively going the extra mile to safely and responsibly welcome everyone back, as we ease out of lockdown."

Iain Jurgensen,
Chair, Argyll and the Isles Tourism Cooperative.

ADVERTISING
Wyvex Media: Oban 01631 568000

EDITORIAL
The AITC team in collaboration with Designline Creative.

WITH THANKS
To www.kieranjduncan.com, West Coast Waters, Wild About Argyll, VisitScotland and Shutterstock for imagery, all business and visitor content contributors, our advertisers and sponsors.

GET ACTIVE WITH YOUR TRAVEL

Day trips, short breaks and longer holidays all start with the journey. The joy of Argyll and the Isles is that all routes to and from all areas enjoy beautiful scenery, stop off places, and points of interest. The hardest challenge is doing a straight trip without stopping off, there's just so much to see, so how will you choose to travel?

Embrace the journey on your way, when travelling between locations, or even on your way home to create a memorable experience.



Pack up the car and bring all your gear with you, ready to explore by land or sea with a ferry crossing. Plan your route and prepare your car for the weather.



Take advantage of great bus services with West Coast Motors from Glasgow and the central belt, with connections throughout Argyll and the Isles with all other modes of transport. Sit back and enjoy the views or hop on and off as you please. Plan ahead at westcoastmotors.co.uk



With a direct rail link from Glasgow to Oban, The Gateway to the Isles, you can make your journey in good time, and less stress. And with the launch later this year of cycle carriages from Scotrail, you can be as active as you like once you arrive. Plan ahead with scotrail.co.uk and check out the Rail and Sail tickets with CalMac Ferries too.



If you are moving in and around areas within Argyll and the Isles, make the most of the great outdoors in all its beauty, by exploring on foot. There are an

abundance of walk trails to discover, inland or via the coastline. To get those legs moving check out wildaboutargyll.co.uk



Argyll and the Isles has as many waterways as it does road and rail links. Ports and harbours are spread throughout the west coast, our islands and peninsulas to give you access to amazing sailing routes. Or start by land at any of the many ferry ports and start your journey with a unique CalMac experience. For sailing routes visit sailscotland.co.uk and plan with ferry timetables at calmac.co.uk



Cycling really is one of the best ways to actively travel throughout Argyll and the Isles. With carefully designed cycle routes soaking up the best landscapes and places of interest, you can enjoy a gentle pedal or step it up a gear on a more intense ride on one of our many long distance cycle routes with the Wild About Argyll bike packing trail. www.visitscotland.com/see-do/active/cycling/national-routes/map

ARGYLL & THE ISLES

SCOTLAND'S ADVENTURE COAST

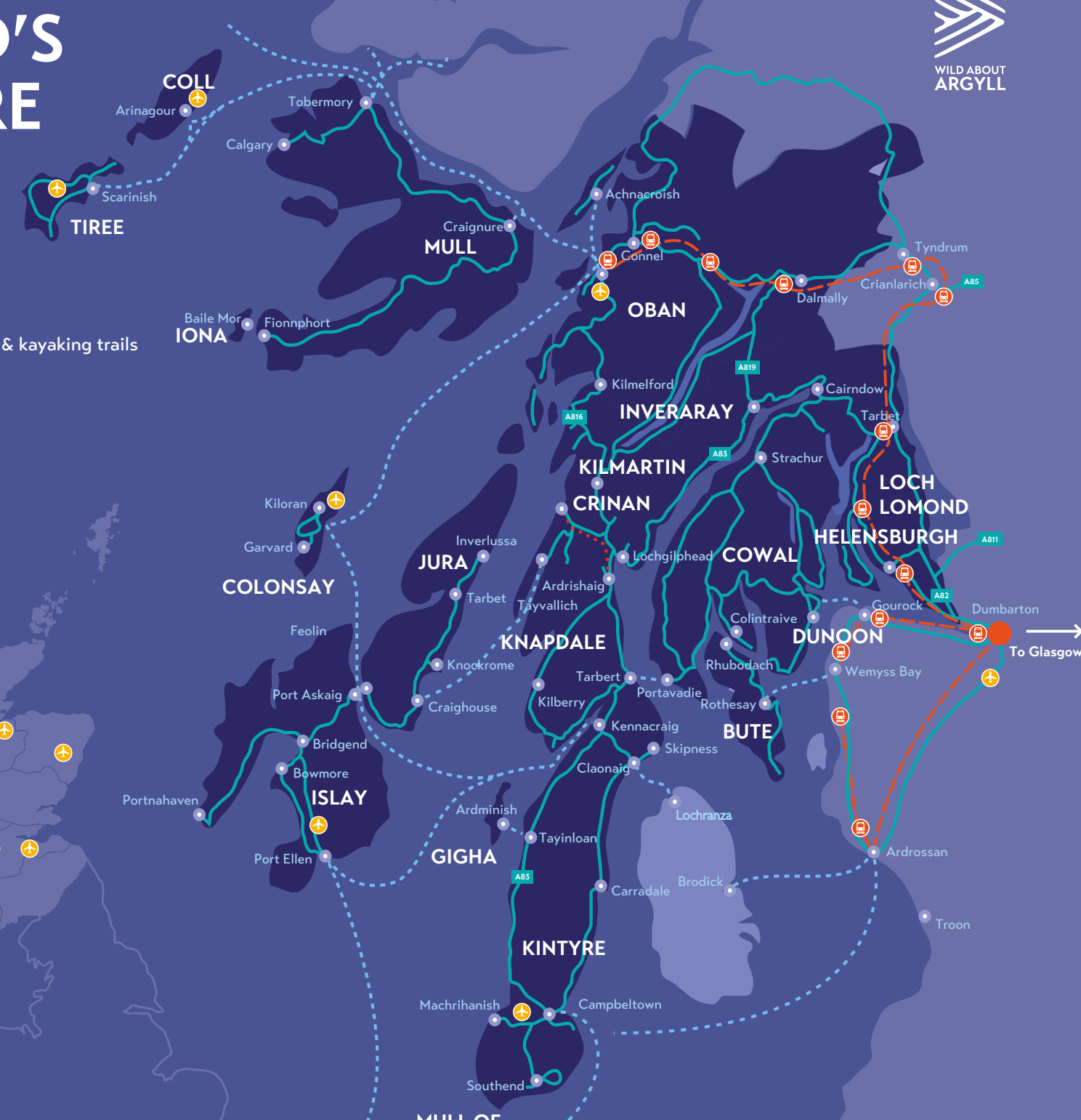
- 3723km of coastline
- 1555km of hiking, biking & kayaking trails
- 61 medieval castles
- 24 gin and whisky distilleries
- 23 inhabited islands
- 4 national nature reserves

- Main Roads
- Vehicle Ferry Routes
- Passenger Ferry Routes
- Canal
- Airports
- Train Stations

Transport links are changing regularly as lockdown lifts. Please always check before travelling and book ahead where possible. wildaboutargyll.co.uk/travel

Go wild and plan your adventure
at wildaboutargyll.co.uk

#wildaboutargyll



50cl Orange & Coffee
Liqueur from Beinn An Tuirc,
distilled in collaboration
with close friends from
Argyll Coffee Roasters.

WIN!

Take and share your most loved spot of Argyll & the Isles, and tell us why by tagging #wildaboutargyll. We'll pick a lucky winner through a prize draw and send a special bottle of Orange & Coffee Liqueur.

On 15 July, we released our new national film **Only in Scotland: Why Scotland Needs You**, to welcome back Scottish tourism and remind us what a beautiful country we have right on our doorsteps. It encourages Scots, and people who consider Scotland home, to travel close to home in a responsible way and appreciate all Scotland has to offer.

As a follow-up to the national film, we've created a regional Argyll & the Isles film which showcases the incredible sights, sounds, tastes and special moments that can be found in the region. In addition to being shared across our own digital channels, the videos are being used as part of a paid YouTube campaign targeting Scots living outside Argyll & The Isles, to inspire them to visit the region. Locations in the film include; Loch Etive, Kilchurn Castle Lochawe, Lagavulin Distillery, Westport Beach, the Isle of Staffa plus more.



Check out all you need to know before you travel at visitscotland.com

GOING THE EXTRA MILE FOR OUR VISITORS



We are wild about Argyll, but we're also wild about our visitors. Creating a welcoming experience is always what's important to us, but even more so post-lockdown.

Q&A WITH RHODA, ISLE20.COM AND TIREE TEA ON SERVING UP VISITORS A NEW SHOPPING EXPERIENCE

Rhoda explains how she has given visitors access to amazing products from her area via online shopping, since they couldn't visit as usual. Keeping customers and visitors at the heart of our industry is so important to her and local businesses.

How have you gone the extra mile during lockdown?

Just before lockdown I set up my online free directory for businesses in the area, this then grew into a digital marketplace for businesses who perhaps had not set up online due to the high barrier fees. So far, we have 450 businesses listed on the website with 100 using for online marketing and over 1,000 products, it's crazy how much it's grown and the timing of it all was perfect.

What have you missed most about not being open over the past months?

Before you travel that extra mile check where is open and when at go.wildaboutargyll.co.uk

Hear from a local business who made virtual-visitors her priority during lockdown, and also from VisitScotland who share how you can make the most of your staycations in a responsible way. **#OnlyInScotland**

Well working on Isle20 has kept me very busy throughout lockdown but I also have another company called Tiree Tea, which is a mix of tea blends and herbal infusions, so I've missed the customers from that aspect and selling them tea. It was very much the driving catalyst for me getting set up online and I managed to get it set up within a few hours ...we have people from across the world buying their friends and family personal gifts to show they are thinking of them.

What have you learned about your community during this time?

We have the most incredible range of talents and businesses here. I think there was a lack of support for the minor businesses, so by setting up Isle20 we're really able to support each other across the islands.

Going the extra mile for visitors beyond lockdown..

Like the online shopping, here we have a similar problem with

food shops and suppliers, so I'm piloting a programme in Tiree called 'Isle Eats' similar to UberEats, where you can order online, pay and collect. Here you can find the local fisherman, bakery, butchers, hotels etc. It's all being done for community interest and is a not for profit scheme. I'm hoping it will eventually be rolled out across all the isles.

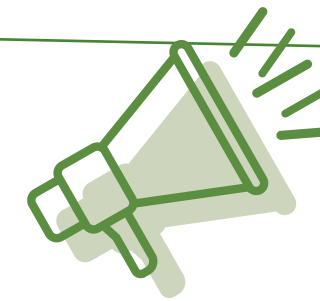
Your favourite hidden secret spot or activity in Argyll and the Isles?

Oh, I love exploring the coast of Tiree on a boat or kayak. There's a special spot called the 'Ringing Stone' it's a really erratic boulder along the coast that you can only get to by walking. It's a real mystery, as it's hollow so if you hit it, it will make a ringing sound.

There's an urban myth if the stone splits in two, Tiree will disappear under the sea!



Rhoda Meek on Tiree



WE'RE GOOD TO GO, ARE YOU?

Our businesses and communities are working hard to give you a welcome, that is not only friendly and warm, but also safe and responsible.

When you visit you'll notice things are a little different, but everyone really is going the extra mile to make these differences positive and comfortable, to give you peace of mind that all Covid-19 guidelines are being met across the tourism and hospitality industry.

We ask that all visitors go that extra mile too, to respect staff, communities and fellow visitors by following the Government guidelines we are all so familiar with now.

A record number of Good to Go businesses here in Argyll & the Isles

At the end of July, over 10% of all Good to Go accreditation's in Scotland were from Argyll – 575 businesses of 5773 - given we are only 2% of the Scottish population, this is an impressive number and showcases our dedication. This number of accreditations is growing day on day!

A MESSAGE FROM VISIT SCOTLAND



It remains important to encourage responsible tourism, so we've created a new visitor charter which provides a guide on how to enjoy Scotland over the coming months. Our charter informs visitors of how they can work together with businesses and communities to help the tourism industry get back on its feet, in a safe way. The charter is available to download from [VisitScotland.org](https://visitscotland.org), and is a valuable resource. To help you plan, it's also vital to check web listings regularly.

We've recently worked with Tourism Northern Ireland, VisitEngland and VisitWales to develop **"We're Good to Go,"** a new UK-wide industry standard and consumer mark to provide confidence for visitors, communities and tourism businesses alike. Many businesses have already got involved by **obtaining their free accreditation**, so look out for their Good to Go badge online and at their premises."



LOOK OUT FOR THIS LOGO WHEN PLANNING AND BOOKING AHEAD

TOP TIPS WHEN VISITING LOCAL SHOPS, OUT FOR FOOD & DRINK AND STAYING IN ACCOMMODATION

- Book ahead to avoid disappointment
- Look out for Good to Go logo
- Support local businesses by using the of Eat Out to Help Out offers
- Be patient as service may take a little longer
- Buy and shop local to support businesses and local producers and makers
- Recognise excellent service and reward where you can
- Don't forget your face coverings and physical distancing etiquette

Check where is open and when at go.wildaboutargyll.co.uk



50% OFF

UP TO £10 PER PERSON MON-WED IN AUGUST AT PARTICIPATING EATERIES – LOOK OUT FOR THE LOGO. WHERE WILL YOU GO?

Check out local listings by searching the 'Eat Out to Help Out Register' online

This government funded initiative is aimed at helping encourage locals and visitors to eat out Monday to Wednesday and support local businesses in building up their trade post lockdown. You can eat out as many times as you like on these days!

UK wide scheme

Born from a love of where we stay, where we work, and most of all, where we love to play and spend our free time, this special edition magazine has been curated by the team at Argyll and the Isles Tourism Cooperative, known as Wild About Argyll – Scotland’s Adventure Coast.

Our passion for place, people and tourism is practised every day, through economic impact projects to promote, and benefit all areas, to locals, domestic visitors and international tourists.

We care immensely about the area and the importance of protecting and respecting tourism and our environment, to sustainably grow our communities and economy.

Throughout the year we work closely with government, partner organisations, stakeholders, businesses and communities to make a significant positive impact on and from tourism. We add value through our supply chains and activity. Below is a snapshot pre-lockdown and our aim is to recover and build on this success over the coming years.

- 5,793,000 visitor days
- 2,885,000 visitor numbers
- £364m direct spend in Argyll
- £510m economic impact
- 9,618 jobs in the tourism sector

We are the strategic destination marketing and management organisation for the entire Argyll & Bute region on the west coast of Scotland. We are also people with passion for our area and love the opportunity to share it with you.

It is with great delight that we can welcome locals and visitors back to our businesses and we give thanks for helping to support us year on year, and even more so through this global crisis. We are hopeful to make this a local success in kindness and community spirit as we carefully recover and grow.

*Facts and figures source: STEAM Final Trend Report for Argyll & Bute, 2009-2019, Global Tourism Solutions Ltd)



Paddleboarding in West Bay Dunoon

Stuart's relief at The Harbour Gallery reopening

Argyll artist Stuart Herd has reopened his galleries and the relief is palpable.

The 49-year-old of The Harbour Gallery on Harbour Street, Tarbert, has been painting professionally for 15 years.

Stuart, famed for his beautiful acrylics on canvas - showing wild landscapes or vivid street scenes - reflects on this strangest of all years, which also shut his gallery in Argyll Street, Ullapool.

He explained: 'In February we were still getting stock ready for the new season and then when lockdown happened it was very scary to be honest.'

'During lockdown there was nothing coming in. It was really worrying. The paintings supply the galleries and if the galleries are shut...' his voice trails off.

As well as his own galleries, Stuart's paintings sell at 20 others across Scotland.

His works of art are regularly shipped across the UK, to Europe and the United States. On average, they sell for between £400 and £600, but he does larger works too.

There's a waiting list of around six to eight months for a commission but as lockdown struck the galleries were forced to close and he was concerned about the future and his six staff.

Stuart, a married father of one, had all the time in the world to paint at his studio, a couple of minutes from his home, yet he freely admits his motivation went AWOL.

Yet he made it into the studio most days.

'I started quite a lot of paintings and I still have a lot left to finish but if you're not getting the work coming in and you are worried about paying the bills it starts to stagnate and there's nothing you can do about it,' he explained.

'You can't suddenly produce work if you're not allowed to open or sell. The creative spark was still there but I was starting work but just not finishing it.'

A big help was joining volunteer group Team Tarbert, which sprang into life to help vulnerable residents during lockdown.

Stuart, through neighbours, got involved in delivering essentials such as shopping.

'It was good,' he says. 'It got you up and got you out and by the end it was probably taking me three hours a day as I was shopping for five or six different houses.'

'It was well worth doing and I got to know some nice people, and it was a good motivator, to get out and do something for the community.'



A selection of some of the new facemask designs available from The Harbour Gallery

He felt he properly turned a corner about a month ago when the future started looking more hopeful. The phones started to ring again and the inquiries started.

The galleries then reopened in mid-July - with social distancing and other measures in place - and customers have flocked back.

Inspiration is all around him too. As Stuart says: 'We are lucky where we live here on

the west coast. You could plot one square mile and probably spend the rest of your life painting that one square mile because the light changes and the season changes.'

He finds inspirations on journeys - spotting potential subjects that have the 'wow' factor.

His paintings are landscape realism, which accounts for around 60 per cent of his work. But he is also renowned for his

Highland cows, rowing boats, paintings on maps and sports scenes, from golf to rugby and football stadiums, as well as more offbeat subjects.

He likes 'hundreds' of painters, including Scottish artists like Jolomo - John Lowrie Morrison, based in Tayvallich, and Jack Vettriano.

'I kind of jump around and don't put myself in a box,' he says. 'I'm inspired by everything.'



Stuart Herd, owner of The Harbour Gallery, outside of his workshop in Tarbert



Pine View to Jura



Tarbert Approach

NEW ORIGINAL PAINTINGS & PRINTS

Available online or from the galleries

Stunning collections of original artwork, prints, ceramics, Jewellery and historic memorabilia.

Tarbert PA29 6UA, Tel: 01880 821170

Pop in or buy online at

www.theharbourgallery.com

Also at Argyle Street, Ullapool and 'The Gallery at the Royal' Tignabruaich

THE HARBOUR GALLERY

UP TO £10 OFF FOOD
PER PERSON
Monday to Wednesday

Sit Out HELP OUT

Welcome Back

With lockdown behind us and all our restaurants open, we are proud to share the Spirit of Scotland with all of our guests.

Local lobsters and Scottish beef from the Josper Grill and fine wines in our bars and restaurants. Our hotel restaurants feature menus that take inspiration from the best of local produce. From land and sea, our menus are served to you by welcoming staff who reflect the spirit of Scotland.

CLADACH MÒR BISTRO
Loch Fyne Hotel & Spa - Inveraray

GRILL ROOM
Oban Bay Hotel - Oban

SPIORAD NA MARA BISTRO
Isle of Mull Hotel & Spa - Craignure

GLENCOE GATHERING
The Glencoe Inn - Glencoe

CRERARHOTELS.COM
0844 950 6282
★★★★ AA



Loch Melfort Hotel

Lunch with a View

Brand new for 2020, you can now enjoy a sit down lunch in the recently revamped restaurant at Loch Melfort Hotel. Offering fresh, local seafood, Argyll venison and more in a calm and socially distanced environment.

Available 12pm - 2.30pm from Thursday to Monday.

Don't fancy sitting in? Our Bistro is open for a selection of takeaway goodies including hot soup, filled wraps and the usual cakes, teas and coffees. The perfect place to grab a picnic. Feel free to enjoy it on our grounds or just drop in and pick up on your journey. Indoor tables are available if the weather is inclement.

Located next door to NTS Arduaine Garden on the A816

T: 01852 200 233 | reception@lochmelfort.co.uk
www.lochmelfort.co.uk | Arduaine, by Oban, PA34 4XG
Find us on:

Stay in Kintyre

Welcome to great choice

You might choose to explore Kintyre, play endless rounds of golf, hike, bike or try to spot shrikes. Whatever you decide to do, we've got your back!

Stay in a modern self-catering holiday home at the edge of Carradale or stay in a gorgeous, Victorian Guest House in Campbeltown; in both, you can count on us to make your accommodation comfortable and relaxing!

Visit us at stayinkintyre.com
Or contact our office:
Clan Richardson
T: +44 1586 643404 / E: hello@stayinkintyre.com
Stay In Kintyre, Gowanlea, Argyll Street, Campbeltown. PA28 6AZ

GREAT DAYS OUT

Make a day of it...

IN OBAN & LORN

Oban

Explore the shops, cafes and restaurants. Stroll along the esplanade, watch the fishing boats land their catch, climb McCaigs Tower or Pulpit Hill for outstanding west coast views and sunsets. It is an ever popular 'wet weather' destination with the Atlantis Leisure Centre, the Phoenix Cinema (later in August) and Oban Distillery all in the heart of the town.

Dunollie & Dunstaffnage

Pre-book a visit to the ancestral home of the Clan MacDougall at Dunollie. Nearby Dunstaffnage Castle is one of the oldest stone castles in Scotland with stunning grounds to stroll around.

Glorious Gardens

Take a day trip south of Oban to explore Ardmaddy Castle Gardens, An Cala and Arduaine. Drive north to Kinlochlaich House Gardens near Appin and then to visit Ardchattan Priory Garden. Or travel east and visit Achnacloich Garden, Angus Garden and Ardanaiseig.

Boat Trips, Wildlife Spotting & Outdoor Activities

A choice of boat trips from Oban, Easdale and Craobh Haven including diving excursions, fast RIB experiences, fishing charters and whale and wildlife spotting trips. There are also many operators offering kayaking, gorge walking, canyoning, coasteering, sailing and cycling.

IN INVERARAY, KNAPDALE, KILMARTIN & CRINAN

Inveraray & The Head Of Loch Fyne

With the Castle and Gardens, the Old Town Jail and interesting shops, restaurants and cafes there is plenty on offer. There are two glorious gardens at Ardkinglas and Crarae. Auchindrain Township brings an historic farming community back to life. At the Head of Loch Fyne there are many treats available such as seafood, ale, gifts and plants.

This is the place for a great day out, any day of the year! Pick and choose what takes your fancy whether you are here on holiday, a short break, live here, or travelling out from the central belt. That's the best part - its all within easy reach so there's no excuse for you not to enjoy Scotland's adventure coast.

Kilmartin Glen

One of Scotland's richest prehistoric landscapes. Climb to the top of Dunadd Fort where our ancient kings were crowned, explore the Linear Cemetery and the many chambered cairns, standing stones and stone circles. A visit to Kilmartin Museum is a must - where these intriguing monuments and local history is brought back to life.

Nature Walks

Visit the Argyll Beaver Centre at Barrandainh and then Barnluasgan early evening or just after dawn when you may spot a beaver. Explore Taynish National Nature Reserve with various walks and chances of spotting otters, deer and butterflies. Nearby Moine Mhor National Nature Reserve, is a great place to learn about bugs, beasts and dragonflies.

Take To The Water

A number of boat operators offer wildlife tours some following timetables and others available to charter. A classic trip is out to the Corryvreckan, the world's third largest whirlpool. From Crinan, Ardfern and Seil or take the passenger ferry from Tayvallich to Jura for the day.

IN KINTYRE & GIGHA

The Kintyre 66

New for 2020 - The Kintyre 66. A circular drive or cycle around the peninsula with the east road being single track with ever changing views of Arran and Kilbrannan Sound and the A83 along the west coast offering a more rugged landscape with stunning beaches and views of the Inner Hebrides. Lots of heritage sites, distilleries, producers and eateries to explore!

God's Isle

The Isle of Gigha, just a 20 minute ferry trip away offers a great day out. There are 12 different walks to do discovering Achamore Gardens, the natural wonders of the island and taking in the historic sites too. A perfect island to explore by bike - or kayak - being 7 miles long and relatively flat.

Tarbert Historic Fishing Village

A great day out with lots of interesting shops, cafes, restaurants and galleries to explore, a circular walk up to Bruce's Castle, a scramble across to the shell beach and a wooded walk to the White Shore. The Harbour is always busy and you can watch the catch being landed or stroll along the pontoons lined with yachts, cruisers and traditional boats.

Kintyre Golf

Kintyre packs three of Scotland's best links golf courses within 20 miles of each other - Dunaverty, Machrihanish and Machrihanish Dunes. A great day out from Kintyre is to take the ferry to Islay for a round on the traditional links course at Machrie.

IN COWAL

In and around Argyll Forest Park

Something for everyone; drive scenic lochside roads, visit fine beaches, villages and gardens; explore the middle slopes by walking forest trails or cycle a network of forest roads; or climb up to the ridges and hilltops for panoramic views.

Cowal's Glorious Gardens

A garden lover's dream day out visiting Benmore with its 150 year old Redwood Avenue in a majestic mountain setting and then Ardkinglas Woodland Gardens where you'll find Europe's mightiest tree and the Gruffalo Trail.

On The Hills & Mountain Tops

For a unique experiences explore the hills above Ardentinn with Quadmania. The Arrochar Alps are a great day out for the experienced hill walker. Or discover Lochgoilhead - with hill routes to Ardgarten and Strachur, and a trail around the remote Ardgool Peninsula.

Take To The Water

Get out on or even in the water with Wreckspeditions, join Lochgoil Cruisers for the day or book a sailing lesson with Tighnabruaich Sailing School. Explore the Argyll Sea Kayak Trail,

from Portavadie through the Kyles of Bute to Dunoon. Later in the summer Portavadie's leisure pools will be back open for a more relaxing experience.

IN BUTE

The West Island Way

A 25 mile walk to do as an epic day trip or simply enjoy short sections. Running the full length of the island the route embraces a variety of landscapes; seashore, moorland, farmland and forest. Connecting numerous heritage sites, it feels like every stone has a tale to tell.

Cycling

Perfect for cyclists, Rothesay is a great base to start from. Choices include a 10 mile loop to Ettrick Bay with a 5 mile detour taking in Scalpsie Bay, or the loop to the south taking in Kingarth. Whatever route you choose you must challenge yourself to cycle up the Serpentine!

Getting on the Water

If you get the chance you will never forget a sail around the stunning Kyles of Bute to Tighnabruaich. Alternatively explore the 57 miles of beaches and coastline by kayak. Hire a boat on Loch Fad or, new for 2020, arrive in style in a sea plane landing on the Loch.

Historic Sites

Mount Stuart is normally a must visit on Bute but as yet does not have a date for re-opening, but there are several standing stones, cists, Iron Age forts and memorabilia from WWII to explore tying in a visitor to Bute Museum.

IN LOCH LOMOND & THE CLYDE SEA LOCHS

The Three Lochs Way

34 miles of track linking Loch Lomond, the Gareloch and Loch Long via Balloch, Helensburgh, Garelochhead, Arrochar and Inveruglas and with train stations along the way.

The West Highland Railway Line

Join one of the world's most scenic train journeys at Helensburgh Upper, Garelochhead, Arrochar/Tarbet onwards to Ardlui, Crianlarich and Tyndrum and take a trip to Oban or Fort William and Mallaig - why not combine with a walk, climb or lunch?

The Clyde Sea Lochs Trail

A driving route that guides you round the history and heritage and stunning view points around Dumbarton, Helensburgh, Rosneath Peninsula, Gareloch and Loch Long route, with many stop off places for lunch or afternoon tea.

Glorious Gardens

Three very different gardens, close to each other. Geilston - intimate and tranquil. Glenarn - the 'Himalayas on Glasgow's doorstep'. Linn Botanic Garden - a horticultural treasure trove from around the globe.

IN ISLAY, JURA & COLONSAY

Islay Distillery Tour

You'll struggle to do them all in one day, so do take time to decide which to visit as our world class distilleries each offer a different experience as well as taste! You can 'walk the distilleries' from Port Ellen visiting Laphroaig, Lagavulin and Ardbeg.

Islay Heritage

Do a self guided tour at Finlaggan, followed by a visit to the Museum of Islay Life at Port Charlotte, finishing with a walk around the planned village of Bowmore making sure you visit the beautiful 'round church' (with no corners for the devil to hide in).

Isle of Jura

A must for any outdoor enthusiast is the strenuous circular walk taking in the three Paps of Jura. An alternative equally scenic delight is to cycle north to the end of the road and back with a trip to Lussa Distillery and Beach

Isle of Colonsay

Take a picnic and walk across the strand at low tide to Oronsay Priory and Beach to enjoy the birdlife and archaeology. Equally stunning is to walk along Kiloran Bay and onwards to Balnahard Beach at the north of the island.

IN MULL & IONA

Iona Abbey

For anyone visiting Mull, or even Oban on the mainland, a great day out is a trip to the Isle of Iona. Iona, the Cradle of Christianity, attracts around 130,000 people a year but you'll struggle to know where they all go as you invariably leave Iona with a sense of peace and solitude.

Ulva, Staffa & The Treshnish Isles

Community owned Ulva offers a great day from Mull with several way marked trails leading from the boathouse to features of interest. Alternatively, take a boat trip out to Staffa to explore Fingal's Cave or to the Treshnish Isles for excellent bird and whale and dolphin spotting.

Wildlife Spotting

Mull has more wildlife operators than anywhere else in Argyll & the Isles and a great day out is a wildlife tour either on land or sea with expert guides - and invariably increasing your chances of spotting whales, dolphins, sea eagles, otters, red deer and much more.

IN COLL & TIREE

Coll

A day out on Coll is simple - pick a beach, pack a picnic and simply while away the hours - then treat yourself to a drink and supper at the Coll Hotel. Coll has 23 individual beaches some easier to get to than others. A great night out on Coll is star gazing with an expert on a clear dark evening.

Tiree

Start from scratch or brush up on your surfing or paddleboarding skills with Wild Diamond or Blackhouse Watersports or hire a bike from Tiree Fitness to explore the numerous beaches, galleries and giftshops. Book a trip with Tiree Sea Tours to Skerryvore lighthouse or the nearby Treshnish Isles.

Just some inspo to spark your interest this summer taking into account who is open and able to welcome you. Much more at **wildaboutargyll.co.uk**



OBAN & LORN

Welcome to the seafood capital of Scotland and the gateway to the isles. Oban and Lorn is a fascinating part of Argyll and the Isles with an amazing range of things to see and do, many of which you may never have done before.



Are you ready to experience more? Here you can meet lobsters face to face, dive with sharks, enjoy a dram at one of the oldest distilleries in Scotland, climb to the summit of the hollow mountain or get close to the world's third largest whirlpool. Let's explore... and go the extra mile to make memories from your holidays and trips, which will leave you wanting to make even more with family, friends or even a solo adventure!

OBAN

Rightly known as 'the Seafood Capital of Scotland', Oban is the buzzing and booming ferry port and main town of Argyll and the Isles. There is a fantastic mix of lots of great shops, restaurants, cafés and attractions plus a myriad of great days out of exploring the surrounding area.

For novice or keen kayakers, yachtsmen and divers, the seas around Oban offer the best in Europe for their sports, whilst the surrounding dominating hills and glens are magnificent for walking and cycling, at any pace which takes your fancy.

BENDERLOCH AND APPIN

Meandering sea lochs penetrate the hills and mountains of these two picturesque peninsulas north of Connel, offering you amazing opportunities to go explore on foot, by bike or even by kayak.

The beautiful ever-changing views across Loch Linnhe to Lismore, Morvern and Mull are truly epic and a highlight is the iconic view of Castle Stalker near Appin... will you go get your Insta-worthy pic?

TAYNUILT & DALMALLY

One of the main routes into Argyll is the scenic drive from Tyndrum to Oban, along Glen Lochy and through the Pass of Brander, hugging the northern shores of Loch Awe, and then the southern shores of Loch Etive. There is rich wealth of fascinating natural and industrial heritage to explore at Bonawe Iron Furnace, Glen Nant Heritage Nature Reserve and the captivating St Conans Kirk.

LOCH MELFORT AND CRAOBH HAVEN

Loch Melfort and Craobh Haven are great bases for watersports and sailing, with the Craobh Marina located on the northern shore of the Craignish peninsula. The idyllic scenery of tranquil lochs and waterways reflecting the array of sail boats, large and small, creates an oasis of calm and escapism, right here in Oban and Lorn.

ISLE OF KERRERA

Beautiful Kerrera is Oban's closest island neighbour and can be seen from most parts of the town. The ferry journey from Oban to Kerrera takes just a few

minutes. Just 7km long and around 2km wide, the island is a walkers' and cyclists' paradise, with quiet tracks and stunning scenery. Don't miss the ruined Gylen Castle, a small tower house built in 1582. The Kerrera Tearoom and Bunkhouse is a great spot for some refreshments.

ISLE OF LISMORE

What a gem of an island at only 10 miles long by 1 mile wide, perfect for gentle walks and cycles, whilst being surrounded by water and wildlife. And all this located close to the mainland via a short ferry trip from Port Appin or Oban. Gaelic for 'great garden', Lismore is considered to be Scotland's most fertile island and is home to more than 130 different bird species.

THE SLATE ISLANDS

Sometimes known as the Lorn Islands, you can access this amazing collection of small islands by crossing the 'Bridge over the Atlantic'. The Isles of Seil, Easdale and Luing in the Firth of Lorn were once the centre of UK slate and the Atlantic Isles Centre offer much interest with a visitor centre, a folk museum, a heritage centre, boat tours and the World Stone Skimming Championships.

YOU REALLY WILL BE IN AWE OF LOCH AWE!

Loch Awe is Scotland's longest freshwater Loch with incredible natural and cultural heritage assets around its shores, in the water and on its islands. This is a place to stay a while, to explore and to experience a real mix of activities at a pace to suit you. It'll be a huge hit with those who love getting away from it all, to it all.



KILCHURN CASTLE IS A CLASSIC REASON TO STOP AND SAVOUR THE VIEW BUT THERE IS SO MUCH MORE TO EXPLORE AROUND THE SHORES OF LOCH AWE!

Make a real connection

Loch Awe was popular for railway tourism in the Victorian era when steamers sailed on the loch and many of the hotels were established around its shores were built. Today, if you love to explore the road less travelled with zero compromise on unearthing outstanding beauty spots and getting active or relaxing in any way that takes your fancy, then Loch Awe is the place for you. It's an experience you can call your own.

The brilliant Caledonia Way, from Campbeltown to Inverness, runs along the west shore of Loch Awe, and is an epic cycle in part or in full. And later this year, Scotrail will introduced the UK's first active travel carriage for bikes and other kit

onto the Glasgow to Oban West Highland Line – so there's no excuse not to make your travelling that bit more active.

There are four stations on this line along the north of Loch Awe giving access to the Caledonia Way and the Wild About Argyll Bike Packing Trail, forest tracks and key heritage features, picnic spots, waterfalls, outdoor activities and local communities with accommodation, eateries, artists and attractions.

Surround yourself with natural beauty, with a glistening loch at the heart of it - we're sure your mind and soul will appreciate it.

THE AMAZING HIGHLIGHTS OF LOCH AWE

- Outstanding built heritage features including Kilchurn Castle, Innes Chonnel Castle, St Conans Kirk and prehistoric remains.
- Fantastic opportunities to spot iconic mammals and birds of prey with many important habitats including the Glen Nant National Nature Reserve.
- Argyll's tallest munro - Ben Cruachan - towering over the loch's north shore.
- Great stop offs to buy from Cakes in the Call Box and Black Rock Curry and visit Heartfelt Liz and other artists around the Loch's shores - who take part in Artmap's Open Studios at the end of August.
- A range of cycle routes including the Caledonia Way, the Wild About Argyll Bike Packing Trail and the Oban Sportive circuit
- The Ben Cruachan Inn Hill Climb route from the loch shore to Ben Cruachan Dam.
- A choice of unique self catering experiences, hotels and inns with character and launch points for kayaking and boating.
- Extensive forests and woodlands to trek and explore by foot.
- Stunning waterfalls, viewpoints and picnic spots or some well-being time forest-bathing.
- A fisherman's paradise for freshwater fish.
- All this, readily accessible by car, train, bus, bike and boots.

STAY CONNECTED Visit wildaboutargyll.co.uk/destinations/oban-and-lorn or oban.org.uk

60 SECONDS WITH...

FIONA, THE PIERHOUSE HOTEL

What have you learned about your community?

The support shown to us has just been phenomenal. We're booked everyday with repeat guests and even the wider audience have been exceptional at reaching out.

What do you love most about living and working here?

The best views of Loch Linnhe on Lismore every single day. From a work perspective, we have the most fantastic team who have been incredibly hardworking at getting the Pierhouse up and running again.

TRACEY, BEN CRUACHAN INN

How have you gone the extra mile during lockdown?

We've been providing new services such as picnic and takeaway menus, offering breakfast to your room and embracing our outdoor space even more.

What do you love most about living and working here?

Our location is a bit of strange one as we're in between places but it's such a special place and I feel Loch Awe hasn't reached its full potential yet.

Your favourite hidden secret spot or activity?

Loch Awe- I find it so tranquil being out on the water and find

all the islands are fascinating, no two places are the same with things like ancient burials or castle ruins.

CALUM, LOCH MELFORT HOTEL

How have you gone the extra mile during lockdown?

We allowed staff to move out their staff accommodation into a room of their choice and use hotel facilities - I think they really enjoyed themselves!

What do you love most about living and working here?

The amazing scenery - coastlines, lochs, mountains and it's all on your doorstep.

Any special stories from your area during lockdown that makes you smile?

We used to host music nights for musicians in the area and it proved popular with both the locals and our guests. As that's been unable to happen, the musicians got together and organised outdoor sessions.

JOHN, THE WHISKY VAULTS

How have you gone the extra mile during lockdown?

We decorated all 10 rooms and built a whisky tasting room & bar and a beer garden.

What have you learned about your community during this time?

The interaction of local people and visitors is amazing, it's Oban's best advert.

Your favourite hidden secret spot or activity?

The benches next to the Sailing club in the sunshine, it's amazing.

FERGUS & NESS, HINBA COFFEE ROASTERS

How have you gone the extra mile during lockdown?

We've been busy refitting our new coffee shop during as well as focussing on our online sales. We had to slightly change our product and offer coffee bags which fitted through letterboxes and took away any posting charges. We tried to make sure everyone got their coffee as quick and fresh as possible.

Any special stories from your area that makes you smile?

I really admired the Balvicar Store, Wendy and Chris went the extra mile to keep the local community together.

JANINE, CATCH-A-CARROT

How have you gone the extra mile during lockdown?

I have been doing bespoke food deliveries, starting with treat and cake boxes and expanded to savoury and ready meals.

What have you missed most about not being open over the past months?

Serving the customers... for a long time, I was one of the few vegans here but now I'm seeing more people, including non-vegans, getting involved.



PLANNING YOUR JOURNEY

The traditional route is by car or bus via the A82, then either the A83 via Inveraray before heading north via Dalmally to join the A85, or continue north on A82 to join the A85 at Tyndrum.

For a slight detour, follow the A83 to Lochgilphead, follow the Crinan Canal before travelling through Kilmartin Glen and northwards to Oban and Lorn.

Or sit back and relax on a regular train or bus journey from Glasgow to Oban.

-  **Seafood**
-  **Castles**
-  **Gardens**
-  **Boat Trips & Ferries**
-  **Cycling**

WHERE TO NEXT?

Browse our map on page 5 and read on for inspiration on other areas to travel some extra miles on your staycation.

From Left to right.
Coaststeering near Oban
Seafari near Easdale
Kilchurn Castle, Loch Awe
McCaig's Tower Oban

Etive Boat Trips

Cruising on Loch Etive or around the Firth of Lorn. See castles, wildlife and stunning scenery. This year we are offering private charters for you and your family, choose from a short 2 hour trip to a full day excursion.

- 2 hour trips for 4 people starts from £110
- Choose your own itinerary
- Your dog is welcome
- Departing Dunstaffnage Marina, 2 miles from Oban
- Please see our website for changes to our operational practices during Covid-19



Call **07900253585** to book

See our website for full details: www.ativeboattrips.co.uk

Dear Community Friends,

As people start to transition out of lockdown and begin to plan a holiday or short break away, we at Tralee Bay Holidays would like to reassure our local community that self-catering accommodation providers in the area are working around the clock to ensure the safety of both residents and visitors.

Over the next few weeks as businesses begin to reopen, we will see an increase in the number of people coming to Argyll and the Highlands to enjoy all that the beautiful West Coast of Scotland has to offer.

Some of these people will be tourists from further afield looking to enjoy our beaches and beautiful countryside, not to mention all the amenities our towns and villages have to offer. There will also be a number of NHS and front line staff, delivery drivers, teachers and supermarket staff - all key workers who have kept the country going over the past months and are in desperate need of a break. Many visitors will also be Scots coming to Tralee from other parts of the country.

We want them all to feel welcome and safe and we are doing everything in our power to ensure that happens.

We appreciate that many people are concerned, but as our shops, cafés, bars, restaurants and hotels - which provide vital employment for people living and working in Argyll and the Highlands - depend very much on tourism as a source of income.

This is our home and our community, and we would like to thank you all for working with us to welcome visitors to this very special area and ensuring that we all survive this pandemic.

With best wishes,

David Shellcock
Tralee Bay Holidays

Tel: 01631 720255
www.traleebay.co.uk
www.highfieldholidays.co.uk



OFF THE BEATEN TRACK

Go the extra mile and visit some less well-known hidden gems and places. They are well-worth exploring to make the most of your post-lockdown trip.

- Ardmaddy Gardens
- Avich Falls and Barnaline Oakwoods
- Bridge over the Atlantic and a trip to Easdale
- Duncan Ban Monument, Dalmally
- Inverawe Country Park and Fishery
- Kerrera and Gylen Castle walk
- Lismore - guided tours, cycle hire and The Gaelic Heritage Centre
- Ocean Explorer Centre, Dunstaffnage
- Pulpit Hill Viewpoint, Oban
- St Conans Kirk, Lochawe



INVERARAY, KNAPDALE, KILMARTIN & CRINAN



This is the Heart of Argyll, a place rich in natural and historic wonder, surrounding the scenic and popular waterway of the Crinan Canal. You can seek out and explore countless natural, cultural and built heritage features and places, get active in the forests, delve into our lochs and spark your creative spirit through many of our artists who live and work here.

With so many nooks and crannies, winding roads, hidden pathways and linked waterways to find and enjoy, you'll realise physical distancing has always come naturally here. Perfect for day trips or longer stays, this is the ideal base, literally in the middle of Argyll and the Isles.

INVERARAY AND NORTH LOCH FYNE

Rich in heritage, with the stunning and commanding Inveraray Castle, The Royal Burgh of Inveraray is the ancestral home of the Duke of Argyll and Chief of the Clan Campbell. The fairytale 18th century castle sits within stunning gardens on the banks of the River Aray, next to the 18th century new town of Inveraray, home to excellent eateries, shops, the historic Inveraray Jail and other attractions, plus the legendary Loch Fyne Oyster Bar just a few miles north at the head of Loch Fyne.

LOCHGILPHEAD, LOCHGAIR, MINARD AND FURNACE

Lochgilphead is home to an exciting mix of independent shops and galleries, cafes and gift shops. Travelling north along the A83 on the banks of Loch Fyne there are great places to stop off and

explore including Crarae Gardens, Leacainn Forest Drive, Auchindrain Township Museum and many woodland and forest walks close to Lochgair.

CRINAN CANAL

Sail, walk, cycle or kayak along the UK's prettiest shortcut. At just 9 miles long and in operation since it was built over 200 years ago, the canal connects the charming harbour at Crinan overlooking the Sound of Jura with Bellanoch, Dunardry, Cairnbaan and Ardrishaig on Loch Fyne.

KILMARTIN GLEN

One of Scotland's richest archaeological landscapes with over 800 ancient monuments is ready for you to unearth. All set within a 6 mile radius, this is the densest collection of ancient rock art in Europe. Also Kilmartin Glen has been occupied for over 7000 years and was once the heart of the ancient kingdom of Dalriada. Delve deeper at Kilmartin Museum to get the full story.

ARDUAIN, ARDFERN AND THE CRAIGNISH PENINSULA

A small and perfectly formed peninsula reaching

into the Sound of Jura with a choice of walks, water sports, horse riding and wildlife spotting. Craignish Loch is always active with yachts moored around the pretty village of Ardfarn. Close by, Arduaine has magnificent gardens with spectacular coastal and island panoramas.

KNAPDALE FOREST

The land of 'knaps and dales' is characterised by twisting and turning lochs and steep ridges carved by the forces of nature and clothed in forests and woodland. Today Knapdale is home to the beavers released during the Scottish Beaver Trial. The pretty village of Tayvallich nestles around a natural harbour on west Loch Sween with sandy Kilmory Beach on the east shore just south of Castle Sween.

TARBERT AND THE KILBERRY PENINSULA

The pretty historic fishing village of Tarbert with its cafés, bistros and galleries sits on the narrow neck of land linking the Kintyre peninsula to the rest of Argyll. To the north is the Kilberry peninsula with its beautiful unspoilt coastline overlooking the Paps of Jura and wealth of notable features, such as the Kilberry Sculpted Stones and St Columba's Cave.



PLANNING YOUR JOURNEY

Travel to Inveraray and onwards to Kilmartin and Knapdale by car or bus via the A82 and then the A83. Alternatively, travel via the A85 and then south after Dalmally to Inveraray, or go as far as Oban and then follow the A816 southwards to Kilmartin.

Or catch the ferry connection from Arran or Cowal to Kintyre and northwards to the Heart of Argyll.



Castles



Marine & Boat Trips



Nature & Wildlife



Artists



Pre-historic Monuments

WHERE TO NEXT?

Browse our map on page 5 and read on for inspiration on other areas to travel some extra miles on your staycation.

From Left to right.
Standing Stones in Kilmartin Glen
Tarbert Harbour and Castle
Argyll Beaver & Wildlife Centre at Barrandaimh,
Knapdale

Read interviews in full at wildaboutargyll.co.uk

60 SECONDS WITH...

HEATHER, HEATHERY HEIGHTS

How have you gone the extra mile during lockdown?

Keeping in touch with people online and writing pieces on how to keep fit and healthy.

Any special stories from your area during lockdown that makes you smile?

I noticed a lot of businesses still continued to cater to people's need, particularly small ones. The Larder in Tarbert still continued supplying fresh fruit and vegetables during lockdown.

Your favourite hidden secret spot or activity?

A special spot for me is Ben Cruachan, you get views of Mull and the western isles. I also love going kayaking in the West Loch in Tarbert.

Three words to sum up how you're feeling now?

Relieved, tentative, excited

EILIDH, SALTY DOG CAFE

How have you gone the extra mile during lockdown?

We started offering 5 meals for £20 to those who were self-isolating or the elderly, then ventured out into cake boxes and afternoon tea.

What have you missed most about not being open over the past months?

The social aspect of talking to our regulars daily, however now that shielding is almost over a lot of the locals are still hesitant on coming out so we are still continuing to offer our delivery service.

What do you love most about living and working here?

Lochgilphead is peaceful and quiet, the city only takes a 2-hour drive but I tend to go into Oban.

Three words to sum up how you're feeling now?

Relieved, overwhelmed and happy

SANDY, VENTURE WEST

How have you gone the extra mile during lockdown?

During lockdown we were available for essential travel as we are members of the local coast guard line.

What have you missed most about not being open over the past?

Our regular customers and being out and about tracking the wildlife.

What do you love most about living and working here?

When we take out tourists you really learn to appreciate the area we perhaps take for granted. Covid has made us realise that we need to slow

down and appreciate the smaller things, it's not always about the bigger picture.

Your favourite hidden secret spot or activity?

Corryvreckan is great for animal watching, you can see the sea eagle and seals in their natural habitat. There's so many bays, nooks and crannies to explore including Crinan Canal.

PETE, ARGYLL BEAVER CENTRE

How have you gone the extra mile during lockdown?

We were unable to run our beaver walks so we filmed and narrated our walks and posted them on Facebook Live. We really upped our interaction on social media during lockdown, setting up cameras in the garden, filming tadpoles as well as sharing craft activities on our website for the kids to do.

Your favourite hidden secret spot or activity?

I love going out on Knapdale Loch and Loch Sween, sitting on a canoe with no one around, it is brilliant.

Three words to sum up how you're feeling now?

Relief, excitement, opportunities

OFF THE BEATEN TRACK

Go the extra mile and visit some less well-known hidden gems and places. They are well-worth exploring to make the most of your post-lockdown trip.

- Achnabreck Cup and Ringmarked Stones
- Auchindrain Township
- Beaver Centre at Barrandaimh and Bellanoch Viewpoint
- Castle Sween, Kilmory Knap Chapel and Beach
- Carnasserie Castle
- Crarae Gardens
- Dun na Cuaiche Viewpoint, Inveraray
- Kilberry Sculptured Stones
- Keills Chapel
- St Columba's Cave, Ellary

STAY CONNECTED Visit wildaboutargyll.co.uk/destinations/inveraray-knapdale-kilmartin-and-crinan or heartofargyll.com

BRINGING YOU TO THE ISLANDS



Colonsay



Coll



Tiree



We are pleased to be able to bring you back to the communities we serve. We all appreciate your help in making it a positive and memorable visit.

Earlier this year when it wasn't possible to visit, CalMac brought the Scottish islands and their stories to you via our island diary films.

Now we are at the stage where we can bring more of you back to the West Coast. For those of you missing the islands and to those of you who are travelling soon, here's a reminder of how to get the most from your visit this year. For those of you who are waiting a little while longer, you'll still find some inspiration to help plan your future visit.

BEFORE YOU GO

This year has been a challenging year for all of us, including our island communities. If you're planning to visit this year, it's more important than ever to plan ahead and be prepared.

The West Coast is undoubtedly one of the most beautiful locations in the world. When you visit, you'll receive a warm welcome, but we must all be sensitive and always follow official and local guidance.

Before you travel, visit the official website for your destination to find out about how each local community and how the area is managing arrangements locally, things will differ from one location to another.

SAFER TRAVEL

When you travel with us at CalMac, it's also vital you follow our safer travel advice, even if you're on holiday mode:

- Don't travel if you feel unwell or are self-isolating.
- Plan ahead & be prepared.
- Wear a face covering on our vessels and in our buildings, unless exempt.
- Wash hands regularly.
- Pay contactless.
- Observe physical distancing.
- Always follow our guidance and listen to staff.

For more details, visit: calmac.co.uk

ISLANDS TO EXPLORE AROUND ARGYLL

Now you've done the groundwork, you can look forward to a warm welcome on some of the best destinations the West Coast has to offer.

Islay – the beautiful and tranquil Queen of the Hebrides renowned for its whisky making pedigree, as well as its stunning and spacious seascapes, and wildlife.

Jura – Just across the water from Islay, and with a world class reputation for its own local produce – whisky, coastlines, rich history and culture.

Colonsay – A tiny island that's just a two-hour ferry ride from Oban. Measuring around 10 miles by two, it's a haven for wildlife and outdoor enthusiasts.

Tiree – The Hawaii of the North and Scotland's very own sunshine island. As well as sunshine, you'll find a rewarding destination for lovers of the outdoors, sport and food.

Coll – Just 6 miles to the West of Mull – Coll's famous for its dark skies and is one of the best star gazing and night time photography locations in the UK.

Mull – Less than an hour from Oban there's over 300 miles

of coastline to explore – home of beautiful bays of turquoise water and unspoiled white sands.

Staffa – An uninhabited island, just off the coast of Mull – a natural wonder and home to Fingal's Cave. Local tour companies can aid your visit. This time of year, you might spot colonies of Atlantic Grey seals and some perhaps even passing Minke whales.

Iona – An historic island, and one of Scotland's most sacred sites. It's also home to the ancient burial place of Scottish Kings – including MacBeth.

Kerrera – Just a few minutes by boat from Oban – one of the most accessible islands on the West Coast where you can explore the dramatic ruins of 16th Century Gylen Castle.

Lismore – A short ferry ride from Oban lies the tranquil and unspoiled island of Lismore, boasting beautiful coastal scenery and mountain views as far as the Great Glen.

Gigha – A tiny community owned island, the most southerly of the Hebrides surrounded by pure, clear turquoise waters and just 20 minutes on the ferry from Tayinloan.

Bute – Beautiful Bute can be reached in 5 minutes from Colintraive and is renowned for its fantastic sheltered beaches and world-renowned architecture.

Kintyre – Scotland's mainland island famous for beautiful seascapes – a fantastic backdrop for outdoor pursuits of all kinds.

THE BEAUTY OF ARGYLL

Not only is Argyll a fantastic location from which to explore these remarkable islands – it's a great base to explore the Clyde area in the south, neighbouring Lochaber and our port in Oban is the gateway to the Outer Hebrides in the north.



Mull



Staffa



Bute



Islay



Visit our social media channels or calmac.co.uk for more information on travel guidance, inspiration about our other destinations, and to view our Island Diaries series.

Caledonian MacBrayne®

Hebridean & Clyde Ferries



KINTYRE & GIGHA

Unhurried, unspoiled and unforgettable. Explore Kintyre and Gigha to experience a place like no other. The beautiful Kintyre peninsula is swept by the warm Gulf Stream and is one of the sunniest and driest areas on the west coast of mainland Britain, especially in May and June. So why not make here part of your plans for next year, or any time of year?



Studded with small villages, pre-historic and Celtic archaeology, abundant wildlife and remarkable beaches, Kintyre and Gigha retains natural beauty, character and peace, with an impressive variety of Highland, Lowland and Hebridean scenery. This beautiful peninsula is packed with great things to see and do, from whisky distilleries to world-class golf courses. Walk the Kintyre Way, visit ruined castles, catch some waves on the surfing beach at Westport and feast on fresh seafood. You can enjoy all of Kintyre's highlights on the new Kintyre 66 route.

Kintyre is also a great base from which to explore some of Argyll's islands. Sitting three miles west of Kintyre, Gigha is an enchanting small island. It's the most southerly of the Hebridean islands, famed for its white sandy bays and offers walking, cycling, kayaking and golf. You can also visit the isles of Arran and Islay from Kintyre.

CAMPBELTOWN

Once proclaimed the whisky capital of the world with 34 distilleries, Campbeltown is the main town on the peninsula. Built around Campbeltown Loch there are a number of distinctive buildings and the waterfront is lined by palm trees and floral displays. There are now three distilleries for the whisky enthusiast to savour, many independent shops, a museum,

heritage centre, swimming pool and cinema, so there's something for all the family.

MULL OF KINTYRE, SOUTHEND AND DUNAVERTY

Brought to life in song by Sir Paul McCartney, the southern tip of Kintyre is a wild and genuinely remote place with the Antrim coast of Ireland visible on a clear day. Enjoy the tranquillity of the stunning beach at Southend and nearby Dunaverty – a haven of calm. Make your own memories by going the extra mile to discover this remote yet beautiful place.

MACHRIHANISH AND WEST KINTYRE

Are you a fan of amazing coastlines? The west coast of Kintyre is rugged and exciting with raised beaches, glorious sands, crashing surf, the blue Atlantic ocean and stunning sunsets over the islands of Gigha, Islay and Jura. Machrihanish is synonymous with links golf and is home to one of the best opening holes in the world. Nearby Westport beach is one of the top mainland beaches in Scotland for surfing, and simply blowing away the cobwebs to reconnect for the mind, body and soul.

THE ISLE OF GIGHA

If you're seeking out a true sense of tranquillity, Gigha is the place for you. The community-owned

Hebridean island of Gigha is just a short three mile ferry from Tayinloan. It basks in higher than average sunshine hours with exotic gardens, bleached white beaches and vast clear skies. When you visit you'll understand why it was named 'God's Isle' by the Vikings.

CARRADALE, SADDLE AND EAST KINTYRE

Going the extra mile to travel along the single track B842 is well-rewarded by stunning scenery and so much more. The charming villages of Skipness, Grogport, Carradale and Peninver will spark your interest with many important archaeological sites, medieval castles, great walks, seafood and gin experiences, ample opportunities to spot wildlife and constant panoramic views over the Kilbrannan Sound and the peaks of Arran.

TARBERT AND WEST LOCH TARBERT

Scotland's greatest natural harbour overlooked by Robert the Bruce's Castle is the gateway to Kintyre and Gigha. The narrow stretch across to West Loch Tarbert is where Magnus Barfot, King of Norway dragged his Viking longboat in his successful bid to claim Kintyre. Fresh catches are landed daily in the harbour and served in local eateries and there is a great choice of galleries, gift and coffee shops to while away an afternoon.

60 SECONDS WITH...

NIALL, KINTYRE GIN

How have you gone the extra mile during lockdown?

We started to manufacture hand sanitisers and provided these to the local markets and charities. We're still continuing to produce these and have been able to reopen for tours again - we're finding it's been busier than ever before. We are also cracking on with building our bespoke gin school and looking to launch in September.

Your favourite hidden secret spot or activity?

My wife loves going wild swimming with her friends and family in Torrisdale Bay.

Three words to sum up how you're feeling now?

Relieved, excited and confident

LINDA, KINTYRE LARDER

How have you gone the extra mile during lockdown?

We started serving products from our door then moved onto home deliveries, we also started changing our stock lines to products perhaps people couldn't get at the supermarkets.

Any special stories from your area during lockdown that makes you smile?

The Campbeltown Resilience Group were great at setting up very quickly and providing

deliveries and help for those in need.

Three words to sum up how you're feeling now?

Anxious, relieved and cautious

KIRSTEN, STARFISH RESTAURANT

What have you missed most about not being open over the last three months?

The customers, we have a really loyal base. We love what we do and the busy lifestyle. Being stuck at home has been a real shock to the system.

What have you learned about your community?

How amazing Tarbert is. We're a thriving village and this has just placed an emphasis on how important the sense of community really is. We've even been hearing from customers further afield to show their support and best wishes.

CARA, WILDER WAYS

How have you gone the extra mile during lockdown?

Offering flexibility to make sure we can accommodate everyone.

Any special stories from your area during lockdown that makes you smile?

Our neighbour was volunteering in the area and would be picking up prescriptions and doing

deliveries, but each time he'd take round a bar of chocolate or sweets - it was really lovely.

Three words to sum up how you're feeling now?

Relieved, excited and opportunities

DON, WEE ISLE DAIRY

How have you gone the extra mile during lockdown?

Though we deliver to trade customers only, in the lockdown we began delivering our milk to folk on our routes that we knew were sheltering but wanted out milk. We received letters from all over, expressing their delight at being able to get such wonderful milk on the islands. A bit of a miracle of logistics, but it works.

What have you missed most about not being open over the last three months?

We've not really been out of lockdown, in fact we've been far busier than usual due to the extra demand. I was doing all the same things as before, making ice cream and our dessert sauces, driving delivery vans and taking milk orders. I've realised that much of what we do is by its very nature pretty much done in isolation.




PLANNING YOUR JOURNEY

The main way to travel to and from Kintyre is by car or by bus via the A82 and then the A83 - with a short ferry trip to Gigha from Tayinloan on the Kintyre peninsula.

Or if you are travelling from Southern Scotland, why not sail from Ayrshire to Campbeltown using the CalMac ferry link? This connects with the Glasgow train service. Or cross by ferry via Arran or Cowal to Kintyre – allowing you to explore much more of the west coast.

This ferry link* is unfortunately not running this season. But make your return trip plans for next year.

-  Distilleries
-  Beaches & Surfing
-  Walking & Cycling
-  Golf
-  Seafood

WHERE TO NEXT?

Browse our map on page 5 and read on for inspiration on other areas to travel some extra miles on your staycation.

From Left to right.
Antony Gormley Statue at Saddell
Whisky experience at Glen Scotia Distillery
West Port Beach



Beautiful contrasts and hidden treasures are waiting for you to uncover here. The Cowal peninsula is the seaboard gateway to Scotland's first National Park and is a vast land of rich Highland diversity with charming little villages, mighty mountain peaks, dense forests and deep glacial lochs. What's more, this is a place where time moves differently, yet is so easy to get to from Glasgow – and its shores are known as world-class sailing destinations!

Create space in your life to go that extra mile and enjoy short trips and breaks to Cowal, guaranteed to enrich your well-being no matter which pace you like to travel at. It's all here for you, what are you waiting for?

ARGYLL FOREST PARK

Be deep in nature in the first ever designated forest park in the UK, named in 1935. Situated in the north of the Cowal peninsula, Argyll Forest Park extends to 22,500 acres with two main areas; the gentler forested area around the Holy Loch, Loch Eck, Kilmun, Blairmore and Ardentinnay with lush gardens and shady woodland walks and biking trails, and the higher more rugged landscape to the north around Loch Long and Loch Goil which has attracted mountaineers for over a century, and more so now today! A must-visit is Benmore Botanic Garden with its majestic redwood avenue and stunning plant collections and nearby Pucks Glen which has to be an all-time favourite gorge walk.

ARGYLL'S SECRET COAST

Tucked away in a small corner of south west Cowal, Argyll's Secret Coast is a much-loved hidden treasure for those who travel that extra mile to seek it out. The winding coastline reveals wildlife, tranquillity and impressive scenery at every turn – you'll be overwhelmed at the amount of beauty. It's wild and remote with hills, glens, rugged coast, white beaches, sea lochs, clear waters and ancient forests. Bordered by two beautiful stretches of water – the Kyles of Bute and Loch Fyne – this treasured lovely pocket of Argyll is also peppered with pretty villages with eateries and galleries at Kames, Tighnabruaich, Colintrave and Otter Ferry, not to mention the stunning world-class Portavadie on the shores of Loch Fyne. Will you share the secret coast with others or keep it all to yourself?

DUNOON AND SOUTH COWAL

Dunoon is home to the annual world highland dance championship at the Cowal Gathering which unfortunately is unable to take place this year - and is also the lively gathering place for the Cowal area,

sitting proudly on the Firth of Clyde with great local shops, health, leisure and cultural facilities as well as pubs and eateries. The PS Waverley which is getting new boilers fitted sails on the Clyde, and regularly drops off and picks up, at Dunoon Pier.

South Cowal is bounded by Glen Massan and the Holy Loch in the north and stretches southwards to Ardyne Point and Toward Castle with several forest walks and cycle tracks to relish with panoramic views across the Firth of Clyde and Bute.

NORTH LOCH FYNE

Venture along the east shore of upper Loch Fyne to discover numerous villages and stop off to capture and explore the scenery and local friendly hospitality at Strathlachlan, Strachur, Creggans, St Catherines and Cairndow – with the famous Loch Fyne Oyster Bar at the head of the loch, where you can get a real taste of Argyll. For those wanting to roam, there are great woodland and garden walks, pebble beaches, old castle ruins, chapels, churches and monumental grounds.

COWAL

STAY CONNECTED Visit wildaboutargyll.co.uk/destinations/Dunoon-and-Cowal



PLANNING YOUR JOURNEY

Travel to and from Cowal by bus or car via the A82 along Loch Lomondside and then the A83 over the Rest and Be Thankful, turning south onto the A815 shortly before Cairndow – or by ferry across The Firth of Clyde from Gourrock. A passenger ferry (operated by Argyll Ferries) links the train station and the car ferry (Western Ferries) runs from McInroys Point to Hunter's Quay.

Alternatively, you can take the ferry from Wemyss Bay to Rothesay on the Isle of Bute, then across to Cowal at the north of the island on the Rhubodach to Colintrave ferry.



Events



Mountain Biking & Cycling



Forests & Gardens



Artists & Crafts



Food & Drink

WHERE TO NEXT?

Browse our map on page 5 and read on for inspiration on other areas to travel some extra miles on your staycation.

From Left to right.
The Infinity Pool at Portavadie
Gorge Walking in Pucks Glen
Mountain biking at Corlarach near Dunoon

60 SECONDS WITH...

JOSH, PUCKS REST, WANDERING ICONS

How have you gone the extra mile during lockdown?

We've essentially opened up another business during lockdown where we rent out land rovers.

What have you missed most about not being open over the past months?

I miss the hustle and bustle of the place and having everyone in the garden and seeing people on the beach.

HELEN, BENMORE CAFE

How have you gone the extra mile during lockdown?

By offering takeaway only which was very well received, we then ventured into setting up a marquee outdoors which is something we would never normally do, but it's allowed us to provide our customers with more space and comfort.

What have you learned about your community?

Just how supportive the community has been, it really makes me smile, as soon as we were allowed to reopen, they came out right away to show their support before any tourists.

ROSIE, BURGH HALLS

How have you gone the extra mile during lockdown?

We phoned the social work department to see how we could help, and then the community

kitchen was formed. 7 days a week we prepared meals, two courses for £5, it grew arms and legs!

Any special stories from your area that make you smile?

So many different organisations got involved with the community kitchen, the council provided minibuses for deliveries, the volunteers did cooking and packaging - Benmore Café's chef has been helping prepare food and a number of hotels and cafes have donated food.

EVE, ARGYLL COFFEE ROASTERS

How have you gone the extra mile during lockdown?

We are now providing coffee subscriptions where our customers get to sample new coffees each month.

What have you missed most about not being open over the past months?

I missed visiting the cafes and being able to train people on our different types of coffee. It was a great way for me to get direct feedback.

HANNAH, LIDO COMMUNITY SHOP

How have you gone the extra mile during lockdown?

We remained open throughout and had to quickly implement safety features from the get go. We coordinated with the volunteers and the local council

to still be able to provide for the community.

What have you learned about your community?

We were lucky to have such a strong infrastructure with a very defined area, so you could see where help was needed. People who perhaps use very little technology day-to-day worked so hard to learn it in a way which benefited the community. It really makes you rethink community ownership.

ROS, TIGHNABRUAICH GALLERY

How have you gone the extra mile during lockdown?

Prior to lockdown, I was planning an exhibition around the Secret Regatta for the period the Fife regatta would be on. We then moved the exhibit online in a big virtual project, which was really well received. We ran a separate online art project with two local primary schools for four weeks.

Three words to sum up how you're feeling now?

Creative, wariness and excitement

FIONA, TIGHNABRUAICH SAILING SCHOOL

What do you love most about living and working here?

Making a living off the natural resources in Argyll and introducing it to people for the very first time - it's very satisfying. I love the fact that I don't need to go on holiday.

OFF THE BEATEN TRACK

Go the extra mile and visit some less well-known hidden gems and places. They are well-worth exploring to make the most of your post-lockdown trip.

- Ardentinnay Beach and Forest Walks
- Ardkinglas House Woodland Gardens and the Gruffalo Trail
- Ardlamont Point and the walk to Ostel Bay
- Argyll Mausoleum and Historic Kilmun
- Blairmore Pier and Gallery
- Castle Lachlan and Kilmorie Chapel
- Cormonanchan Woodland Walks, Loch Goil
- Kilmodan Church and Carved Stones, Glendaruel
- Kilmun Arboretum
- Strachur Smiddy Museum



Family time with local deer.

Sponsored by



For me, Argyll has to be the best place to have been in lockdown. Needless to say I had to keep working but to do this from a fantastic location, often sitting outside with my laptop and being able to walk the dogs at 6am every morning along the Crinan Canal and not even having to think about social distancing helped a lot.

To sum up how I am feeling? It was frenetic at the beginning, but I think there have been a lot of positives come out this with new ways of doing things. I am just back from Oban - it's brilliant to see the businesses open. This situation has brought out a real entrepreneurial and innovative spirit and new approaches to doing business.

I have to say, we always knew our communities were resilient but the extent to which they have rolled up their sleeves to support one another has been incredible. It's one of the reasons Argyll & Bute is such a special place - and not just the groups who did exist before, but the new groups that have formed. I am feeling really positive and optimistic about a new way forward in Argyll.



GOING THE EXTRA MILE WITH OUR COMMUNITIES



People are what make each and every town, village and island what they are. A real sense of community spirit is common throughout all - this has never been more apparent than over the past months throughout lockdown and now. Read some stories celebrating this from our residents and businesses.

EMMA CLARK, ISLAY
Owner of Glenegedale House
shares her special story about
the Islay community spirit.

"During lockdown, I worked as part of the 'recovery group' which supported the Isle of Islay in coping with the pandemic. As travel providers weren't going to be taking anyone who showed corona symptoms, we had to, as a business, think of ways we could deal with it on the island.

If someone showed symptoms or tested positive on your premises you would have to accommodate them for 14 days and then self-isolate and on top of that you would need to shut the hotel. You would potentially be losing out on a further month of earnings. This was one of our biggest fears when we started reintroducing tourism to the area, that perhaps people wouldn't declare their symptoms.

I then worked together with our local community to put a pathway in place and came up with the idea of a 'safehouse', which is effectively a self-contained cottage in a rural area. We hoped this would also encourage visitors to be compliant throughout their visit. Here they could phone 111 and visit the local hospital to get a test, which they would do from the comfort of their own car.

The safehouse is a paid accommodation so the guests and locals can be rest assured there is no contact or spread across the community. We will

organise shopping for them to be delivered to their door, have WiFi, 4G, heating etc. It's a very comfortable environment for them to isolate in with their household.

For us, cost is a tiny aspect of it, it's really about protecting the area so we've rolled this safehouse out for a period of 6 months and will review again after this.

Ultimately, I volunteered for the good of the island and the community. It's our responsibility to look after the tourism and hospitality sector after the bashing it took from COVID. I had the ability, knowledge and contacts in place to take this on and we've now been in contact with the other islands to roll out a similar scheme in the next few days.

The council was great in assisting us in finding an appropriate safehouse, I can't stress it enough, it's really reassured people. On top of this, the compliance of visitors has been amazing, wearing face masks and using hand sanitisers. Our recovery group, have also been a power force behind it all, ensuring there's appropriate sanitisers for everyone and appropriate signage across the island. It really has been a great community effort all round."

ALISON JONES, COLL
Coll Community Hall and
Bunkhouse have gone the
extra mile for the community.
"Coll is different from other islands - our businesses aren't just seasonal, we are open all year

round to serve locals and tourists. To then experience everything shut down overnight was really strange... the highlight for most of us was going to the post office! We also had the advantage over urban areas, of our beaches where we could safely go walks and watch the wildlife.

I run the community centre, An Cridhe, which is a key hub as you can imagine, and offers all different types of services. We shut the centre throughout lockdown as there wasn't a need to use it for local food banks etc. The community looked after each other in different ways, but the public toilets and shower remained open. If you were unable to get good broadband service during lockdown you could also come to the centre to use the WiFi service. We are mindful that we must continue adapting to the area's wants and needs throughout the year.

Since lockdown has started to lift, we've been able to get the Saturday Market up and running again in the main hall where local businesses can sell their products. It's a great way of giving our visitors passing through an idea of what the community is like in Coll - we're a very resilient community here. The local hotel and pub are at the heart of community, operated takeaway deliveries during lockdown which was a real special service for the community. It also meant you could have a night off from cooking!



BUTE

Bute is an island of glorious gardens, grand architecture and great beaches. It is also perhaps the most accessible of Argyll’s islands, with a short ferry crossing across the Firth of Clyde with CalMac Ferries. Thanks to this, and a balmy climate, it has been a popular holiday spot for well over a century. Rothesay, Bute’s chief town, is a seaside resort brimming with character, Italian cafés and good-old-fashioned shops. Follow the coastal road south and you’ll find Mount Stuart, a spectacular mansion house set amid acres of woodland.



Bute is a lovely place to explore on foot or by bike, or even on the popular open-top bus tour! Most of Bute’s inhabitants live around the two wide bays on the island’s eastern side, so if you’re looking for peace, solitude and the best beaches, head west. Ettrick Bay is a fantastic stretch of sand with a great café, while Scalpsie Bay is home to a seal colony. The West Island Way is 25-mile walk that takes you the length of the island with a loop in the South.

Most of the island’s towns and villages are on the east with wonderful villas and mansions lining the coast whereas the west is much quieter with sandy beaches and amazing views across to Arran, Inchmarnock and Cowal.

NORTH BUTE & BUTE COMMUNITY FOREST
North Bute is characterised by ancient woodland, commercial forestry, moorland, a rocky coastline and a strong sense of remoteness. A large area is now the Bute Community Forest and has a number of fascinating trails and paths including the Balnakailly Loop, a stunning viewpoint at the WWII Bunker, a Bio Cache Challenge, composting loos and BBQ area for kayakers and much more.

The Balnakailly path leads through the Rhubodach Forest to an abandoned settlement with great views over the Kyles of Bute National Scenic Area and ample opportunity to spot wildlife virtually every step of the way. Just perfect for those who love the great outdoors and getting up close and personal with nature.

SOUTH BUTE, MOUNT STUART AND GARDENS
Immerse yourself in outstanding architecture and natural landscapes. The landscape of South Bute is much softer with rolling farmland and pockets of forest and woodland, and idyllic views across to Arran and over the Firth of Clyde. Mount Stuart is one of the world’s most impressive neo gothic mansions (there is currently no date for re-opening in 2020). Home to the Stuarts of Bute, descendants of the Royal House of Stuart, the flamboyant house and its 300 acres of gardens reflect the artistic, religious and astrological interests of the 3rd Marquess of Bute in its architecture, furnishings and outstanding art collection. We’re pretty sure you’ll be blown away by the beauty here when it re-opens.

ROTHESAY & LOCH FAD
Rothesay is a striking town stretching along the shores of Rothesay Bay with Rothesay Castle at its heart surrounded by a moat. The town dates back to medieval times but it was during the Victorian era that it developed as a thriving seaside resort attracting the throngs “doon the water” on the River Clyde. Today Rothesay welcomes visitors from near and far with a fascinating selection of shops, cafes and restaurants along the esplanade. Just west of Rothesay, Loch Fad, the ‘long loch’ cuts the island in half along the Highland Boundary Fault and is renowned for its scenic beauty, fishing, boat hire and huge diversity of bird life.

ETTRICK BAY, SCALPSIE BAY AND ST NINIAN’S BAY (THE STRAAD)
For beach lovers, the west coast of the island presents three sandy beaches with short walks with way marked features of interest including a bird hide at the south of Ettrick Bay, St Ninian’s Chapel near the Straad and panoramic views over Arran and the Holy Isle above Scalpsie Bay.

60 SECONDS WITH...

RHONA, ISLE OF BUTE GIN How have you gone the extra mile during lockdown?

We switched things up by introducing sanitisers into production, the first few batches we made were free and then for every bottle bought we donated another. All in, we donated over 2,000 bottles of sanitiser to the community and further afield.

What have you missed most about not being open over the past months?

At the start of this year, we got the keys for the new premises in Bute, but of course due to lockdown we weren’t able to get in. It was really frustrating for us as we just wanting to get going with our new adventure. On the positive side, it gave us a chance to review our business plan going forward.

What have you learned about your community during this time?

Personally, I don’t think you can find a stronger community spirit than Bute. People really rally round and help wherever possible. We got a fantastic response from the local community once we were able to open our gin garden, much more than we had initially anticipated.

What do you love most about living and working here?

I actually live in Glasgow but from working here I love the

relaxed way of life, there’s a real good work/life balance and you don’t get stuck in traffic the same way you do in the city centre!

Any special stories from your area that makes you smile?

There was a real surge in community groups since lockdown. A local volunteer, Rima from The Bute Dinner, designed and made great protective masks.

Three words to sum up how you’re feeling now after lockdown?

Relieved, excited, grateful.

JOHN, BUTE BID How have you gone the extra mile during lockdown?

Our BID has not been able to go ahead as planned but we’ve still continued to work by keeping businesses informed with daily information from the Scottish Government and Chamber of Commerces. Although the funding has stopped we’re still working away with the town centre and have created an alfresco area on Montague Street where customers can enjoy products from all businesses.

What have you missed most over the past months?

Missing the contact and engagement from people and understanding exactly what it is they want. It’s been frustrating

not being able to implement it, really frustrating.

What have you learned about your community during this time?

They’re desperate for something like the new initiative to happen. People have come together and shown there is real strength in the community.

What do you love most about living and working here?

I’ve only lived here for two years but I found that it’s really a beautiful island with such great opportunity and some challenges. People are responding and the enthusiasm is there.

Any special stories from your area during lockdown that makes you smile?

There are so many - the local bakery, butchers, taxi’s and the Bute Resilient Team. They’ve all just stayed with it.

Your favourite hidden secret spot or activity?

Here I say there are seven beaches for seven days.

Three words to sum up how you’re feeling now after lockdown?

Excited by the challenge



PLANNING YOUR JOURNEY

Start your adventure with a ferry crossing from Wemyss Bay to Rothesay, either as a foot passenger or with your car. The ferry connects with a regular train and bus service to and from Glasgow and there are service buses and bike hire on the island, so why not leave the car behind?

An alternative route is a short ferry link between Rhubodach, north of Bute, and Colintrave at the Cowal peninsula. This can link with the ferry between Hunters Quay and McInroe’s Point near Gourock on the mainland, or you can drive north on the A82 along Loch Lomond joining the A83 then south on the A815 and A886.

-  Built Heritage
-  Cycling & Walking
-  Wildlife
-  Beaches
-  Gardens

WHERE TO NEXT?
Browse our map on page 5 and read on for inspiration on other areas to travel some extra miles on your staycation.

From Left to right.
The Open Top Bus Tour on Bute
Arriving in Rothesay Bay on the Calmac Ferry
Paddling at Ettrick Bay on Bute

OFF THE BEATEN TRACK

Go the extra mile and visit some less well-known hidden gems and places. They are well-worth exploring to make the most of your post-lockdown trip.

- Bird Hides at Loch Fad and Loch Guien
- Bute Museum, Rothesay
- City Sightseeing Open Top Bus Tours
- Dunagoil Vitrified Fort
- Ettrick Bay, the tearoom and bird hide
- Scalpsie Bay and the seal colony
- St Blane’s Chapel
- St Ninians Bay and Chapel
- The Victorian Loos - gents only
- Wild Bute Walks, Talks and Tours



LOCH LOMOND & CLYDE SEA LOCHS



Known as Scotland’s natural playground and the ‘bonnie, bonnie banks’, Loch Lomond and the nearby Clyde Sea Lochs is a fascinating part of Argyll and the Isles that straddles the Highland Boundary Faultline and is less than an hour from the centre of Glasgow, so it’s right here on the city’s doorstep ready to explore.

Loch Lomond is the UK’s largest freshwater loch and sits at the heart of Scotland’s first National Park- Loch Lomond & The Trossachs National Park, set within a stunning backdrop of rolling hills and the famous peak of Ben Lomond. The Clyde Sea Lochs stretching from Helensburgh around Rosneath Peninsula and up to Arrochar have been delighting visitors for centuries. There’s so much more to this area than the lochs... where will you venture to discover a new hidden gem?

ARDLUI AND INVERARNAN

At the very north of Loch Lomond, Ardlui and Inverarnan are old drover settlements and both are very popular with West Highland Way walkers. Stop at the marina at Ardlui and try some water sports or even anchor up if you’re travelling by boat. The West Highland Railway Line stops here too, so you have all the connections you need by rail, car or boat.

ARROCHAR AND TARBET

The highland village of Arrochar nestles in the shadow of The Cobbler and the other peaks of the Arrochar Alps at the head of Loch Long. Less than a

mile away across a narrow strait of land is Tarbet on the banks of the iconic Loch Lomond. What better base for boat trips, cycling and walking – either at low level or at height to satisfy your adventurous spirit.

LUSS

The picturesque lochside conservation village of Luss is the ancestral home to the Clan Colquhoun. It was originally built to house workers for the nearby slate quarry in the 18th and 19th centuries. Visit to browse great coffee shops, restaurants, a sandy beach and views across the loch to the glorious Ben Lomond. The ideal place for a day trip or to stop off on the A82 for a wander along the bonnie banks or to take a cruise on the loch to explore some of the loch’s 37 small islands. Perhaps you’ll even take part in a water sport activity too?

HELENSBURGH

Don’t miss the opportunity to visit Helensburgh; with broad avenues, the pier and promenade, independent shops and excellent eateries, it’s a great place to spend a day and is home to Charles Rennie Macintosh’s fascinating Hill House, now

enclosed in a protective ‘tent’. The town is a half hour train journey from Glasgow and is an early stop on the stunning West Highland Railway Line which snakes its way north along the banks of Loch Lomond and onwards to the west coast.

CARDROSS AND RHU

Cardross is a large village on the banks of the Clyde to the east of Helensburgh with a farm shop, nature walk, golf course and the beautiful Geilston Gardens nearby. Rhu just a little further west of Helensburgh has excellent sailing facilities and the stunning Glenarn Himalayan Garden.

GARELOCH AND THE ROSNEATH PENINSULA

Gareloch originally grew in the 1820s to cater for tourists on the steamers from Glasgow and later when the West Highland Railway line opened in the 1890s - and today you can still see and enjoy this. The Rosneath Peninsula and the small delightful villages of Cove and Kilcreggan boast magnificent architecture from the Clydeside shipbuilding and Glasgow merchants heyday in the 19th and 20th centuries and have stunning views across the Firth of Clyde and the Sea Lochs.



PLANNING YOUR JOURNEY

The traditional road route into Argyll and the Isles takes you along the A82 either as far as Tarbet when you can head west on the A83 over the Rest & Be Thankful or continue further north on the A82 to Crianlarich.

However, there is a lot more to discover by either following the A814 along the Clyde from Dumbarton to Helensburgh and then following the A814 northwards to Arrochar with a detour on the B833 to explore the stunning Rosneath peninsula. The A817 linking Loch Lomond to Garelochhead is a stunning drive in either direction offering panoramic views to the east and west. Or why not access this area by train and bus, or by walking the Three Lochs Way or using the cycle routes - and leave the car behind.



Boat Trips & Watersports



Food & Drink



Shopping



Hill Climbing



Walking & Cycling

WHERE TO NEXT?

Browse our map on page 5 and read on for inspiration on other areas to travel some extra miles on your staycation.

From Left to right.
Cruise Loch Lomond
The Sugar Boat in Helensburgh
Wakeboarding on Loch Lomond

Read interviews in full at wildaboutargyll.co.uk

60 SECONDS WITH...

CARA, LA BARCA, PADRONE PIZZA, CATTLE & CREEL

How have you gone the extra mile during lockdown?

We started a takeaway and delivery service right away which has proven very popular - we’ve continued to do this.

What do you love most about living and working here?

It’s beautiful being able to live and work by the sea. We’re also very fortunate that we get great local suppliers, to provide for our menus, 80% of our menu is locally sourced.

Your favourite hidden secret spot or activity?

Helensburgh is beginning to be known as a real foody destination. Sitting in the restaurants overlooking the Clyde is breath-taking.

Three words to sum up how you’re feeling now after lockdown?

Optimistic, excited, adaptable.

WILL SMITH, SUGARBOAT RESTAURANT

How have you gone the extra mile during lockdown?

I turned the business into a delivery only unit delivering to thirsty locals and regulars. This grew into the supply of coffee beans, artisan chocolate bars, sacks of flour and cheeses.

What do you love most about living and working here?

The ease of access into Glasgow when needed but 10 minutes north and I am in the middle of nowhere, surrounded by stunning nature and scenery.

Your favourite hidden secret spot or activity?

Cycling is my passion and Glen Douglas is a beauty, the climb in gets the heart beating – plus world class scenery on my doorstep.

SUE, GLENARN GARDENS

What have you missed most about not being open over the past three months?

I missed the sound of people walking round and exploring the garden. We did let locals use the garden for their daily exercise during lockdown.

What have you learned about your community during this time?

I think every community needs to be nurtured which is why I run the village hall. We’ve made the most of what wonderful assets we have.

Any special stories from your area that makes you smile?

As the local church was closed during lockdown, a prayer gate was then created where people left lots of ribbons for one another wishing them well.

TONI, THE OLDE CHRISTMAS SHOP

How have you gone the extra mile during lockdown?

We did a doorstep delivery and

dropped all our sweetie stock up to a hospital for the staff and donated all the new unopened bags we had to the local food bank.

Any special stories from your area that makes you smile?

A fabulous lady in Rosneath, called Autumn Brown, created a lockdown giveaway table in the village and put craft activities for kids to complete, a toy and plant exchange in her garden, it created such a community spirit!

STUART, CRUISE LOCH LOMOND

What have you missed most about not being open over the past months?

The international visitors, we get people coming all the way from North America to India and Bangladesh.

What have you learned about your community during this time?

The local support. We’ve also been focussed on a concept called ‘Blue Health and Space’ which addresses the advantages of being on, around or near water.

Any special stories from your area that makes you smile?

Loch Lomond Whiskies have been great support for us, providing hand sanitisers as well as miniatures for our bar. Both Forest and Argyll Holidays have also been super helpful.

OFF THE BEATEN TRACK

Go the extra mile and visit some less well-known hidden gems and places. They are well-worth exploring to make the most of your post-lockdown trip.

- Ardgarten Forest Walks and Trails
- Falls of Falloch
- Firkin Point picnic area and shoreside walk
- Goukhill Muir Viewpoint on the John Muir Way
- Helensburgh Promenade and Henry Bell Monument
- Inveruglas View Point
- Luss Fairy Trail, Loch Lomond
- Rosneath Peninsula West Coast Heritage Trail
- The Hill House and the Hill House Box, Helensburgh
- West Loch Lomond Cycle Path

STAY CONNECTED Visit wildaboutargyll.co.uk/destinations/loch-lomond-and-clyde-sea-lochs



THE ARGYLL TRILOGIES

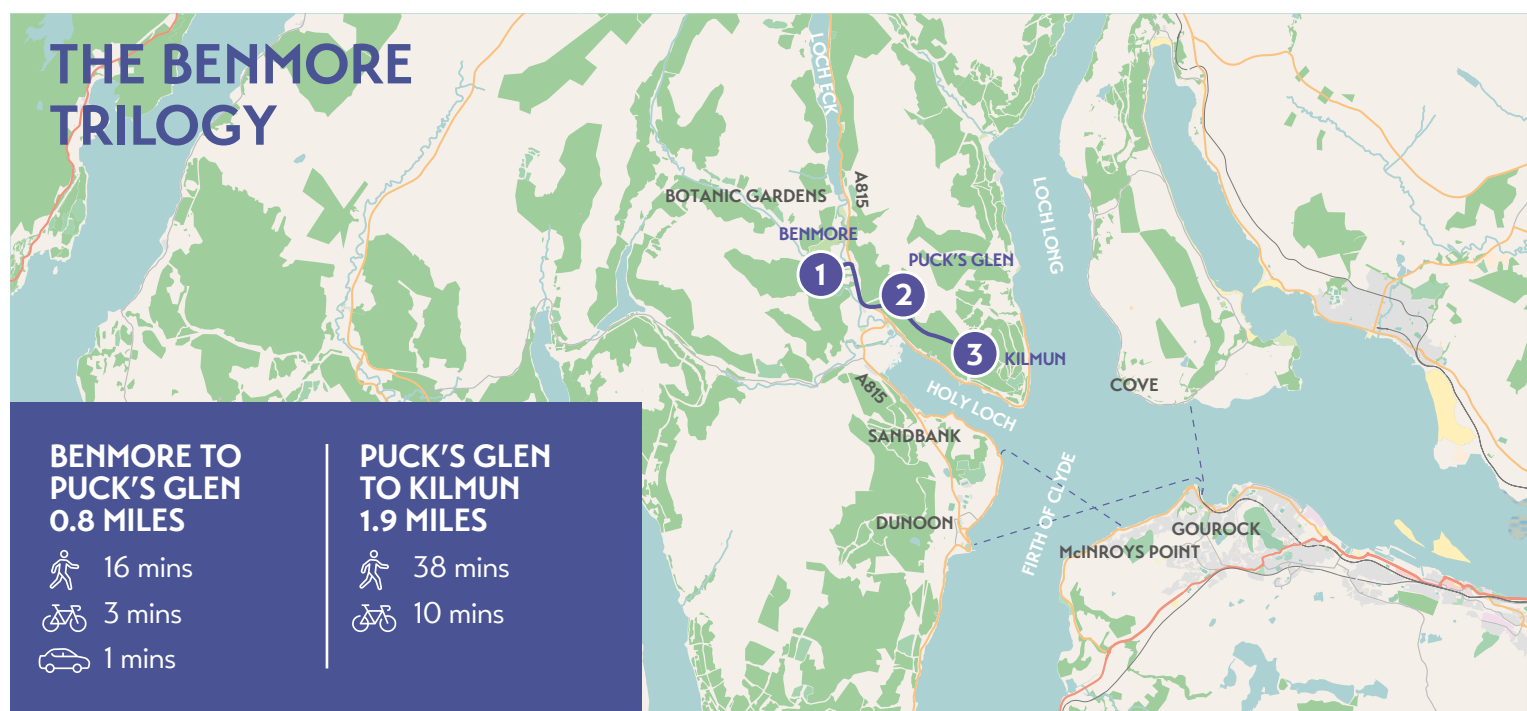
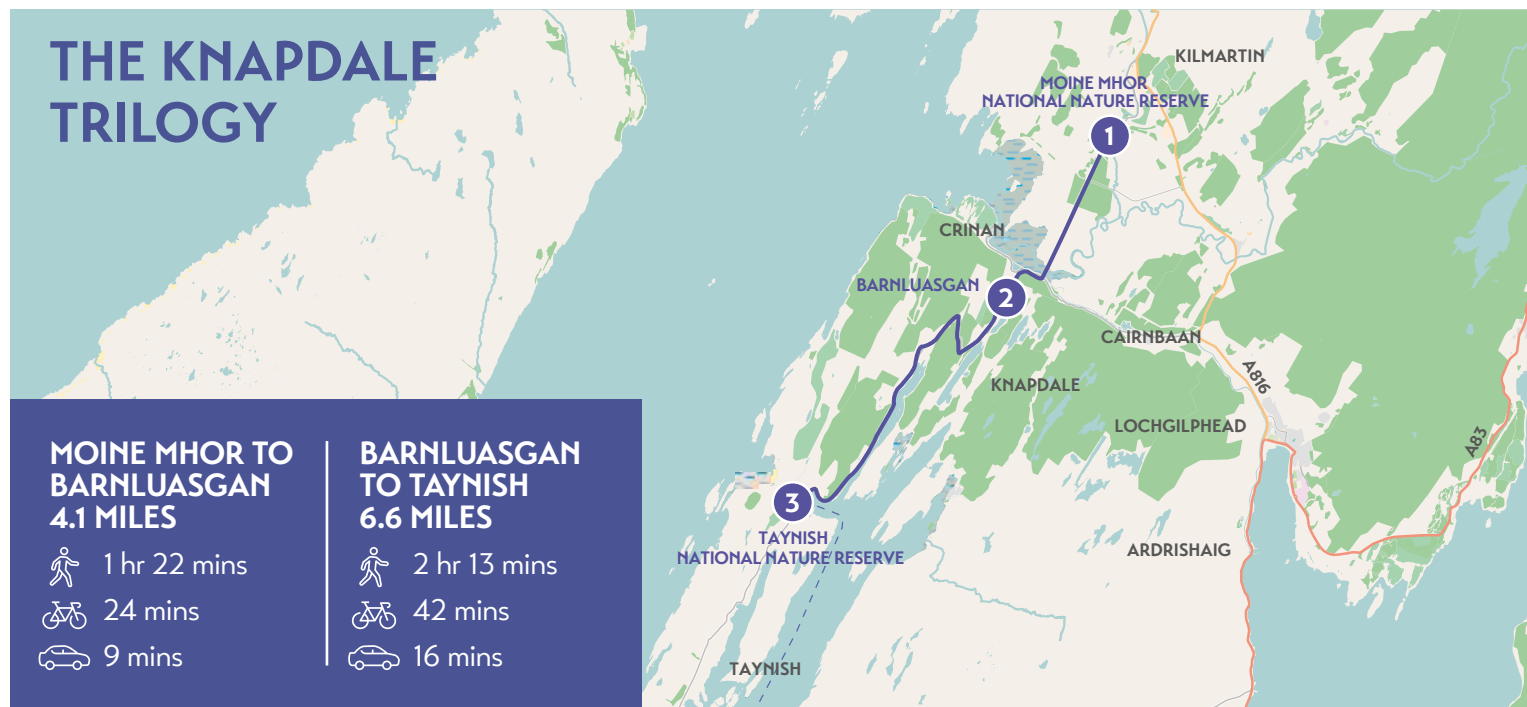
A great day out on a whole other level! These Argyll trilogies are amazing for solo adventures or family and friends fun time, to explore three stunning places in one day.

You'll end the day on a high from achieving and seeing so much! Plan to get active, Argyll style...

Sponsored by



Scottish Forestry
Coilltearachd na h-Alba



THE NORTH ARGYLL TRILOGY

NORTH ARGYLL FOREST: Arrive by road on the A85 heading from Oban and onto the A828 and local road to Glasdrum. From the North head south from the A82 onto the A828. By ferry from the Islands to Oban.

BEINN LORA

A challenging climb through varied woodland at the foot of Beinn Lora is richly rewarded. The panoramic views are among the most memorable in Argyll. From the Eagle's Eyrie on a clear day you can look over Benderloch to Mull, Lismore and beyond.

SUTHERLAND'S GROVE

Walk among the mighty fir trees of Sutherland's Grove, the oldest of which were planted in 1870 and the ancient oaks and Scots pines. The trails follow the gorge of the Abhainn Teithil burn, whose curiously-sculpted rocks create entrancing waterfalls.

GLASDRUM NATIONAL NATURE RESERVE

Overlooking Loch Creran, is the native woodland of oak, ash, birch and alder, an abundance of lichens, grassy glades and the mild, humid climate of the west coast, which makes this reserve one of Scotland's best sites for butterflies.



THE KNAPDALE TRILOGY

KNAPDALE FOREST: Arrive by road from A83 to A816 and on to minor Roads B841 & B8025. By passenger ferry from Jura at Tayvallich. A limited local bus service provides public transport from Lochgilphead to Barnluasgan & Tayvallich.

MOINE MHOR NATIONAL NATURE RESERVE

Gaelic for 'The Great Bog' Moine Mhor is one of Scotland's most ancient landscapes. Growing for over 5,000 years the 800 hectares of original peat bog is one of the largest examples of an estuarine raised bog in Europe.

BARNLUASGAN & BARRANDAIMH

Site of the Scottish Beaver Trial, Barrandaimh offers a Wildlife Visitor Centre and interesting walks to suit all levels including a 1 mile accessible path. Beavers continue to make their home in the nearby lochs and signs of their activity are easy to spot.

TAYNISH NATIONAL NATURE RESERVE

A network of trails to suit all abilities lead the visitor through a variety of habitats including remnants of ancient oak woodland. One of the best examples of Temperate Rain Forest in Scotland and rich in wildlife, Taynish offers many opportunities for the wildlife enthusiast.



THE BENMORE TRILOGY

ARGYLL FOREST PARK: Arrive by ferry from Gourock, Tarbert or Bute. By road from the head of Loch Fyne or top of the Rest & Be Thankful (A83 on to A815).

BENMORE BOTANIC GARDEN

In a magnificent mountainside setting Benmore offers 120 acres of world renowned gardens to explore. With a unique world wide plant collection ranging from Giant Redwoods to delicate ferns there is something to see all year round, and in all weather conditions. (Please note entry fee applies.)

PUCK'S GLEN

An enchanting trail through a deep, narrow woodland gorge with waterfalls cascading down the hillside. The rich undergrowth and dense tree canopy creates a magical and evocative atmosphere that is great fun to explore.

KILMUN ARBORETUM

A hillside Arboretum where trees from around the world have been planted since the 1930s to test their potential for timber supplies. With aromatic eucalyptus and conifers, monkey puzzles and ornamental maples there are trees here to be enjoyed with all of your senses!

For things to do, facilities available plus top tips for different interests visit wildaboutargyll.co.uk/trilogies



Cliff jumping on the west coast of Coll

Coffee, Sugar, Milk & Tea.
 Spices, Olives, Butter, Biscuits.
 Flour, Pate, Juice & Cheese.
 Pickles, Crackers, Capers, Chocolate.
 Pulses, Oils, Herbs & Honey.
 Ice cream, Cereal, Sauces, Jam.
 Gluten/ Sugar/ Dairy - Free
 & MOST THINGS IN BETWEEN.

11 Argyll Street, Lochgilphead, PA31 8LZ
 01546 606 292 www.marmaladedeli.com

Scottish Grower of Quality Plants specialising in Clematis
 Trees, Shrubs, Plants, Seasonal Bedding & Bulbs
 Agents for Northern Polytunnels
 Tools, Seeds, Pots, Garden Ornaments & much more
 Stove and Fireside Accessories
 Takeaway Coffee Shop with Home Baked Cakes, Scones & Soup
 Wild Bird Food - Very good quality at competitive prices

Winter Opening hours:
 October - February
 Wednesday - Saturday 10am - 4pm

Seasonal Opening hours:
 March - September 10am - 5pm
 Open 7 days

Corachie Winter Fuels

Burning peat Bulk bag logs
 Traditional House Coal
 Verdo burning pellets

Open Wed/Thu/Fri/Sat 10-4 On Feb
 Inbox

❖ Dry Seasoned Firewood ❖ Kindling and Waxlings ❖ Verdo Boiler Pellets
 ❖ Sawdust Briquettes ❖ Surefire ❖ House Coal Doubles ❖ Burning Peat ❖ Bottled Gas
 ❖ Main distributor of Flogas / Macgas in the Oban Area ❖ Delivery service available

Corachie Clematis Garden Centre, Bridge of Awe, Nr. Taynuilt PA35 1HT
 Tel: 01866 822149 / 266
 Website: www.corachiefuels.co.uk Email: wholesale@corachieclematis.co.uk

If fuel is required please feel free to phone out of hours

Cothouse Services

- Off Sales • Local Produce
- 1 Stop Shop for all your Groceries
- Special Offers • Jet Wash • Ice Cream
- Slush Machine • Hot Food
- Costa Coffee Machine

Sandbank, Dunoon PA23 8QG

Kinlochlaich Gardens and Garden Centre

West Highland's Largest Nursery Garden Centre

Fruit Trees and bushes,
 Ornamental Trees, Pond Plants
 and Lilies, Acers, Herbaceous,
 Shrubs (many unusual), and
 conifers.

Extensive Gardens in which to
 see how plants grow in maturity
 and their habits.

We also have a self-catering cottage available for rent:
www.kinlochlaichgardenselfcatering.co.uk

Appin, Argyll, PA38 4BD Mob: 07881 525 754
 email: fiona@kinlochlaich.plus.com
www.kinlochlaichgardencentre.co.uk



ISLAY, JURA & COLONSAY

The three jewels of the sea, these Inner Hebridean islands will fill you with joy and enrich your well-being. The Isles of Islay, Jura and Colonsay all boast spectacular beaches and mesmerising wilderness. Home to a vast variety of birds and wildlife, big unblemished skies and, of course, world famous distilleries, these islands are surrounded by the Atlantic Ocean and will have you relaxing with the peace and quiet, tapping your toes to traditional music, tantalizing your tongue with the local produce or delighting your ears with the sounds of nature – not least the elusive Corncrake.

ISLAY

Southernmost of the Inner Hebrides, Islay is famed for its smoky whiskies, overwintering geese and miles of sandy beaches. The island's main features are undoubtedly the single malt whiskies distilled across nine white distilleries, which are sought after the world over. Take a tour at your most loved, or all nine to create a real unique experience you'll never forget, if you keep the tasting to a sensible level! In addition, you can more than satisfy your senses with year round wildlife and bird watching, enjoying quiet unspoiled sandy beaches and meeting the friendly locals.

Islay has a unique sea faring heritage, and many fascinating archaeological sites from standing stones, forts and duns to Finlaggan, the political centre of the 12th century in the Hebrides and headquarters of the Lord of the Isles.

JURA

If you're looking to see more wildlife than you do people, Jura is for you. Considered one of Scotland's last wildernesses with the population of around 200 out-numbered by over 5000 deer. Jura, believed to originate from the Norse 'Island of the Deer' is a walkers' paradise with the Paps of Jura being the main destination. Continue your whisky tour here at the distillery in Craighouse - and venture north to the recently opened gin distillery. The west coast is wild and not the easiest to access, but it really is the ideal place to enjoy solitude at its very best. You can also visit the world's third largest whirlpool, Corryvreckan, which sits between Jura and nearby Scarba in the north – it's a sight like no other.

COLONSAY

For lovers of wildlife and remoteness, Colonsay is one of the most remote inhabited islands in the Inner Hebrides, and is of great interest for birds, the machair and archaeology. The island and neighbouring Oransay, accessible at low tide has been inhabited since 7000 BC meaning there are many archaeological remains to explore and get a sense of life here in years gone by. This tiny island is believed to have the richest flora of all the islands with over 500 different species recorded. Kiloran Bay has to be one of the most stunning beaches in all of Argyll. A delicious local product is the Isle of Colonsay Wildflower Honey. Pack your binoculars as you'll have over a hundred different birds to spot, including the rare chough and corncrake.



STAY CONNECTED Visit wildaboutargyll.co.uk/destinations/islay-jura-and-colonsay or islayjura.com or visitcolonsay.co.uk

Read interviews in full at wildaboutargyll.co.uk

60 SECONDS WITH...

LYNN, LYNN LABELS

How have you gone the extra mile during lockdown?

I got evicted from my old premises during lockdown so I spent my time moving into my new café in Bowmore. I also made afternoon tea every Saturday, this became very popular, lots of people from the mainland ordered them as surprise gifts for their friends and families here. It was really great seeing their reactions.

Any special stories from your area during lockdown that makes you smile?

How each and every single village has come together and volunteered. Each village had coordinators to help head things up. I was driving 40 miles a day to deliver meal twice a week. It was really full on.

Three words to sum up how you're feeling now after lockdown?

Cautious, relieved, anxious

Any special stories from your area that makes you smile?

Gill Tracemore, the local coordinator in our area, pulled out all of the stops. She also helped put together the video for promoting Islay. Surprised if someone hasn't put her forward for an award yet.

EILEEN, WILD THYME SPIRITS

How have you gone the extra mile during lockdown?

We've launched a new product called Cait Sith which generated a lot of interest online and we then had two free colouring book competitions (images of their bottles). We had a huge response and we're now looking at launching our own jigsaws, or Ginsaws as we like to call them, based on our labels.

What have you missed most about not being open over the past months?

Not having people around and all the festival and events this year.

PAUL, ARDNAHOE DISTILLERY

What have you missed most about not being open over the past months?

Without a doubt, being able to showcase the new distillery in Islay. Being the new kid on the block, loads of people have been desperate to visit.

EMMA, GLENEGEDALE HOUSE

How have you gone the extra mile during lockdown?

We have our own hens for giving our guests the freshest eggs but due to lockdown there was a big excess of them! So we put them out at the beach across from where we lived and left an honesty

box. My son was also busy making and selling cakes, 20 cakes would be going out everyday, we're now looking at developing the hen house into a bake house style café where you can have afternoon tea. It's allowed my son to go to university in September by supporting him financially.

What have you missed most about not being open over the last three months?

Seeing the guests enjoying themselves, we sit down and help plan their perfect itineraries for them and seeing them come back happy after their day was just the biggest buzz for us.

What have you learned about your community during this time?

Every single group has worked together from tourism to ferries, whisky distilleries etc it was amazing. As winter will be hard this month, the community has been working at putting away essential supplies to see us through comfortably.

Any special stories from your area during lockdown that makes you smile?

Great Glen Charcuterie, who provide the finest meats, sent all their loyal customers £50 worth of produce and didn't ask for anything in return which I found a really lovely thing to do.



PLANNING YOUR JOURNEY

Travel to and from Islay and Jura by bus or car to Kennacraig on the Kintyre peninsula and then the 2 hour ferry crossing. If travelling by car to Jura take the Islay ferry from Kennacraig (or Oban on certain days) before taking the short connecting ferry from Port Askaig across to Jura. If by foot, take the passenger only service from Tayvallich near Lochgilphead to Craighouse on Jura.

For Colonsay, drive, take the bus, or train to Oban for the ferry trip to this island.

You can even fly to Islay from Glasgow and to Islay and Colonsay from Oban.

-  Distilleries
-  Bird Watching
-  Food & Drink
-  Beaches
-  Golf

WHERE TO NEXT?

Browse our map on page 5 and read on for inspiration on other areas to travel some extra miles on your staycation.

From Left to right.
Ardbeg Distillery on Islay
Kiloran Bay on Colonsay
Deerstalking on Jura
Golf on the Machrie, Islay

OFF THE BEATEN TRACK

Go the extra mile and visit some less well-known hidden gems and places. They are well-worth exploring to make the most of your post-lockdown trip.

COLONSAY

- Balnahard Beach
- Oransay Priory

ISLAY

- Big Strand Beach
- Islay Woollen Mill
- Kilchoman Parish Church and Military Cemetery
- Persabus Pottery
- The Oa and Loch Gruinart RSPB Reserves

JURA

- Ardlussa and Lussa Gin Distillery
- Barnhill where George Orwell wrote 1984
- Corran Sands



MULL & IONA

Mull and Iona are two islands which serve up breathtaking landscapes, unrivalled wildlife spotting a real taste of island life from food and drink to local crafts and activities.

With so much to do, see and try, plan a stay which allows you the time to go explore fully and at an island pace – it really is the best way to feel part of this place, especially Mull, as the largest and most mountainous of the Inner Hebrides.

ISLE OF MULL

Mull has it all: towering peaks, ancient castles, sparkling sands and a rich cultural life. It has a coastline of 300 miles and the only ‘Munro’ on the inner Hebrides, Ben More. The island is large and has a varied landscape offering unrivalled opportunity to spot birds of prey, otters, red deer, dolphins and whales. Inhabited since 6000 BC there are numerous standing stones, brochs and stone circles on the island. Don’t miss Duart Castle, the 13-century fortress perched on a rocky outcrop, or the white-tailed eagles at Loch Frisa.

It also has Tobermory, one of the most attractive fishing port on the west coast of Scotland and well-recognised for its rainbow of coloured buildings, reflecting in the water no matter the season. This is the main town on Mull with many interesting shops and eateries. Mull will certainly surprise you at every twist and turn, but you’ll never lose sight of that island magic.

ISLE OF IONA

Iona sits less than a mile off the south western-most tip of Mull. This tiny island at only 3 miles long and 1.5 miles wide is in stark contrast to the scale of Mull. Iona is a cradle of Christianity in Great Britain, and a place of pilgrimage for many. The ruins of the medieval abbey, established by St Columba when he arrived here from Ireland in his coracle in 563, are utterly absorbing.

ISLANDS WEST OF MULL TO VISIT BY BOAT
Isle of Ulva and Gometra
Once a thriving community with 600 people living in 16 villages, Ulva is now a world apart but always attracts visitors, including famous trips from Sir Walter Scott, Johnson and Boswell – and even Beatrix Potter. Will you join the famous with a trip that will make you starry-eyed by natural wonder?

The Treshnish Islands
Eight small islands are located to the west of Mull. They are exposed, uninhabited, with no good landing sites, but home to very vibrant wildlife communities including important seabird colonies.

Staffa
This is one of the smallest islands of the Inner Hebrides and was once inhabited by 16 people. Staffa is now a Site of Special Scientific Interest best known for its geological features including the dominant Fingal’s Cave and the basalt columns similar to the Giant’s Causeway.



PLANNING YOUR JOURNEY

Travel by car, bus or train to Oban and then ferry from the CalMac ferry terminal. For the sailor, there is nothing to beat sailing from the Clyde, through the Kyles of Bute then through the Crinan Canal, along the west coast via Oban then the Sound of Mull and into Tobermory Harbour.

- Wildlife
- Food & Drink
- Walking
- Crafts
- Boat Trips

WHERE TO NEXT?

Browse our map on page 5 and read on for inspiration on other areas to travel some extra miles on your staycation.

From Left to right:
Fingals Cave on Staffa
Puffins on Staffa
Isle of Iona
Tobermory on Mull
Mull Cheddar

60 SECONDS WITH...

SALLY, TOBERMORY FISH

How have you gone the extra mile during lockdown?

We started a delivery service offering essential items we don’t normally sell and fish boxes. There’s been a real spike on our e-commerce site. We’ll continue to do post lockdown and even deliver to the likes of holiday cottages, hotels etc to encourage not having to queue outside the shop.

What do you love most about living and working here?

The community spirit, during summer you have a real buzz of the tourism season and then in winter it quiets down and is peaceful – it’s always somewhere you feel safe. Not to mention how amazing the local produce is!

Any special stories from your area during lockdown that makes you smile?

Over 200 people volunteered to take care of those who needed it - working round the clock with doctors and turning the hall space into a Covid facility if needed. They set up a website called Mull Health which was so helpful in giving people tips and advice and you could place your weekly shop here. Younger ones were out doing the deliveries and there was a ‘chatty service’ available if you felt lonely and needed someone to speak to.

Your favourite hidden secret spot or activity?

Glengorm Coffee Shop on the Isle of Mull does the most amazing cakes, it’s down a long winding road and you get the best view of Glengorm Castle.

Three words to sum up how you’re feeling now?

Relieved, exhausted, nervous

COLIN, TURUS MARA BOATS

What have you missed most about not being open over the past months?

It’s been really nice getting back to a sense of normality but I have missed being able to provide the usual bird-watching trips we would do from April – August and our customers.

What do you love most about living and working here?

It’s home! It’s a beautiful and amazing place with the most brilliant wildlife.

Any special stories from your area during lockdown that makes you smile?

How the island came together as a whole, the number of volunteers was in the hundreds it was quite remarkable for such a small island.

Your favourite hidden secret spot or activity?

It’s not really a secret as it’s world

renowned but I’d say Fingal’s Cave and also Treshnish Isles for the seabird colonies.

Three words to sum up how you’re feeling now?

Grateful for community

SARAH, LITTLE BESPOKE BAKERY

What have you missed most about not being open over the past months?

It’s been hard not being able to bake for customers and frustrating that we finally had our new café ready but have been unable to open our doors and show our customers what we’ve been working on the past few months.

What have you learned about your community during this time?

Everyone’s really come together and are much closer than before, whenever we’d be out painting the shop people would stop and talk away and wish us well. Now we’re open so many people showed up to show their support.

Your favourite hidden secret spot or activity?

One of my favourite spots is Port na Ba beach.

Three words to sum up how you’re feeling now?

Excited, apprehensive, overwhelmed

OFF THE BEATEN TRACK

Go the extra mile and visit some less well-known hidden gems and places. They are well-worth exploring to make the most of your post-lockdown trip.

- Aros Park
- Ben More
- Carsaig Coastal Walk and Carsaig Arches
- Calgary Bay and Calgary Art in Nature
- Dun I and the Well of Eternal Youth on Iona
- Isle of Ulva walks and trails
- Kilchoan Ferry and exploring Ardnamurchan
- Lochbuie Stone Circle
- Mackinnon’s Cave near Gribun
- Staffa and the Treshnish Isles

STAY CONNECTED Visit wildaboutargyll.co.uk/destinations/mull-and-iona or visitmullandiona.co.uk



COLL & TIREE

When you think of miles of unspoilt white sandy beaches, think of Coll and Tiree. Go on a Hebridean adventure on these spectacular little islands.



With a population of around 220, Coll is a place to really get away from it all to immerse yourself in some of the west coast's prettiest nature. The white-washed cottages of Arinagour greet you as you arrive. Walk on the windswept beaches, marvel at the wildlife and enjoy a dram or two in the friendly Coll Hotel. Located far from the obscuring haze of light pollution and with no street lamps, Coll has some of the darkest skies in Europe and offers fantastic star-gazing, a treat for keen astronomers.

Known as the 'sunshine isle', Tiree is home to some of the best beaches in Scotland. They fringe most of the island, providing miles of clean, white sands and great surfing, yes, here in Scotland.

Explore by foot, bike or by sea. Depending on the day of the week you can visit Tiree from Coll for the day with CalMac Ferries, or you can charter a local boat operator like Tiree Sea Tours to take you to Coll from Tiree and back. Plan an island hopping adventure.

COLL
This stunning island is known for its carpets of Machair – wildflowers of all different colours, shapes and sizes - along with white shell sand beaches, 23 in total, with views of other Hebridean islands on every horizon. And did you know the Isle of Coll was the inspiration for the Isle of Struay in Mairi Hedderwick's Katie Morag books. The island is home to the elusive corncrake, which is now protected by the RSPB. The rugged landscape is excellent for walks on the west coast around the RSPB reserve in the south and exploring tracks and paths off the 'main' road leading to many of the beaches. Or heighten your senses with a walk to the summit of Ben Feall or Ben Hogh and then along the Acha Ridge for breath-taking views and the feeling of immense well-being.

A great night out on Coll is to watch the skies on a clear dark evening, as it's a designated Dark Sky Community by the Dark Sky Association – the island is one of only two in Scotland, and the only one on an island. What a place to appreciate the wonders of the sky by day and night.

TIREE
Get your wetsuit at the ready when you're on Tiree, positioned just 60 miles west of Oban. This is the most westerly of the Inner Hebrides with a flat and open landscape and some of the highest levels of sunshine recorded anywhere in the British Isles. You'll find beaches dressing almost the full length of the island's 46 mile coastline, and be stunned by the beautiful crashing waves. This is why here is home to the world-renowned Tiree Wave Classic windsurfing event. Tiree is the perfect place to learn from scratch or brush up on your surfing and paddleboard skills.

For those who prefer to appreciate the water from land, the best walks are along the coastline alternating between sandy beaches with machair and rockier sections. Bike and e-bike hire is available on the island. The key places of interest are the ancient Ringing Stone, the impressive Dun Beag broch at Balla, and the complex signal station at Hynish which was the base for the Skerryvore Lighthouse.

STAY CONNECTED Visit wildaboutargyll.co.uk/destinations/coll-and-tiree or isleoftiree.com or www.visitcoll.co.uk

Read interviews in full at wildaboutargyll.co.uk

60 SECONDS WITH...

FRAZER, TIREE SEA TOURS
What have you missed most about not being open over the past three months?

Well the obvious answer would be income for us, but you make friends on the job who you're able to have a laugh and bit of banter with, it's been tough missing out on that.

What have you learned about your community during this time?
It has brought our community together more now than ever, and made people really realise how much we need to value the tourism industry and the revenue it brings to our island.

Any special stories from your area during lockdown that makes you smile?
Andy, the manager at our local Co-op, has been working tirelessly all throughout lockdown and also the medical teams of course. There's been a lot of people who were volunteering to make medical equipment, such as masks, and fundraising for different causes affected by Covid-19.

Your favourite hidden secret spot or activity?
A place that not many people are aware of is The Dutchmanscap, it's a remote island next to the puffin colonies. Whenever I want to

relax or get away, I take the boat out and sit amongst it all. Gunna Sound is a perfect spot for going basking shark watching, they tend to come up from August onwards for a number of weeks.

RACHEL, ROBERTSON SHELLFISH
How have you gone the extra mile during lockdown?
We're grateful that we've been supported by local residents when the continental market was closed and were also able to do deliveries to those shielding. We're hoping to continue to grow these relationships.

What have you missed most over the past months?
As the hotel has been closed, we've missed being able to provide fresh catch straight to the plates that night. Hearing and seeing people's enjoyment of local seafood is a real highlight to us.

Three words to sum up how you're feeling now?
Let's go fishing

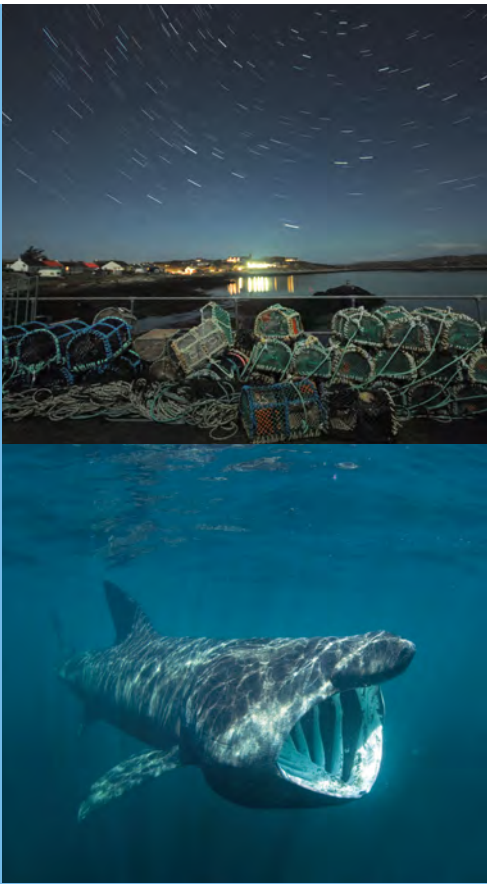
JULIE, COLL HOTEL
How have you gone the extra mile during lockdown?
A takeaway service three days a week and tried to continue using as many local suppliers as possible to keep everyone ticking

round. The extension we built pre-lockdown has also really helped for giving customers a safe distance.

What have you missed most about not being open over the past months?
The buzz of the place, it's all I've ever known hearing laughter and families having fun.

What have you learned about your community during this time?
Well I've been part of this community for such a long time and I was so surprised to be getting the most unlikely people reaching out and giving their support. Whether it was messages or continuing to order takeaways every week. Once we re-opened people were coming out rain or shine to show their support.

Any special stories from your area during lockdown that makes you smile?
One that really stands out for me is Dougie and Paula who work at the Ethical Sales (T.E.S.CO). Throughout lockdown they have been working endlessly to deliver everyone's orders on the island. Also, during lockdown my daughter and I took our dinner to the beach and watched the sunset. This is something we would never normally do as we're so busy - so we loved it and will always cherish the memory!



PLANNING YOUR JOURNEY
Travel by car, bus or train to Oban and then ferry from the CalMac ferry terminal to Coll or Tiree.

There is a small airport on Tiree with scheduled flights from Oban and Glasgow and many private aircraft land on the island. There is also a small airfield on Coll with regular flights from Oban.

- Beaches & Surfing
- Stargazing
- Bird Spotting
- Walking & Cycling
- Seafood

WHERE TO NEXT?
Browse our map on page 5 and read on for inspiration on other areas to travel some extra miles on your staycation.

From Left to right.
Paddleboarding on Tiree
Landing the catch at Scaranish Harbour on Tiree
Dark skies above Arinagour on Coll
Basking Shark off the coast of Coll

OFF THE BEATEN TRACK

Go the extra mile and visit some less well-known hidden gems and places. They are well-worth exploring to make the most of your post-lockdown trip.

COLL
• Beach walks – take your pick!
• Ben Feall or Ben Hogh and Acha Ridge Walk
• Island sightseeing tours with a local
• Na Sgeulachan Standing Stones, Totronald
• RSPB Reserve & Ranger Walks

TIREE
• Bike and e-bike hire with Tiree Fitness
• Dun Beag Broch at Bhalla
• Hynish Heritage Trail and Skerryvore Lighthouse
• Tiree Sea Tours
• Watersports with Wild Diamond and Black House Watersports

CHATTING WITH OUR VISITORS

Read what our recent visitors enjoyed about their day trips or short breaks as they return home from their post-lockdown trip... some went the extra mile, and others made the very most of what's on their own doorstep.

CATHY & FAMILY, SPENDING A FEW DAYS BASED IN ARROCHAR **Is a Staycation a new thing for you?**

No, every year we tend to do staycations in Scotland, England and Wales as well as going abroad. It's something fun to do with the kids and we can also take our small dogs along with us. I think it's about time to relax, we do a lot of walking and eating out.

Who are you travelling with and why?

My husband and two sons. We chose to holiday in Scotland as it felt safe, prior to lockdown we had two holidays planned to Poland and France but of course they had been cancelled.

Is this your first time visiting here or have you been to Argyll and the Isles before?

We've travelled to Arrochar before but never stayed overnight and tend to stay in Argyll about 3-4 times a year.

What have you done in the last 24 hours?

We did lots of things on our trip, we visited Inveraray Jail which was really well presented, went to the Bridge over the Atlantic, Loch Melfort etc. Everything has still been fun as usual and social distancing has been at the forefront of everyone's minds.

What have you missed most about travelling over lockdown?

The change of scenery and the great outdoors. My husband has been cooped up in the kitchen working from home during lockdown so it was great getting away from it.

Where do you most want to visit in Argyll that you've not been to before?

We'd like to visit more of the isles as they're all unique in their own way, we've heard great things about Easdale and Tiree.

Did you discover a hidden spot or visit any new places?

We stumbled across Kilmartin on our way back from Oban, which was a really lovely village. We also visited the stunning Crinan Canal, which my husband saw for the first time, and along the eastern banks of Loch Lomond.

How did you feel before and after visiting?

We were really looking forward to our trip and it definitely delivered. I think you just have to be mindful of the new restrictions being put in place but for us it was really minimal effort and hassle. The experience in Argyll, has given us the confidence to go on more staycations this year.

FIONA & ALI, ON A NIGHT AWAY WITHOUT THE KIDS AT THE PIERHOUSE HOTEL, PORT APPIN **Is a Staycation a new thing for you?**

Staycations aren't a new thing for us. We have 6 children and see no reason to go anywhere else. There's so much on offer and each time you go away it feels like your miles and miles away. I think you'd be mad to go travelling abroad whilst this pandemic is going on.

Who are you travelling with and why?

My husband, it was a much-needed time for us to relax, and not travel far from our home in Argyll.

Is this your first time visiting here or have you been to Argyll and the Isles before?

We've lived in the area for 18 years and travel around all the time, each time and place feels different.

What have you done in the last 24 hours?

Although we had a relaxing holiday, we also had lots of activities, running, going out on the bikes and long walks. We thoroughly enjoyed staying in the hotel and drinking lots of gin & tonics!

What have you missed most about travelling over lockdown?

I travel a lot for work so getting to travel for pleasure has been a great escapism.

Where do you most want to visit in Argyll that you've not been to before?

It would be great to go to Ostel Bay near Tighnabruich for the white stunning beaches.

Did you discover a hidden spot or visit any new places?

We went on lovely walks near Port Appin and Benderloch, and got to see lots of beautiful waterfalls.

How did you feel before and after visiting?

Not anxious at all as I knew where we were going was super trustworthy. It exceeded all my expectations, great food and appreciated that management kept things super calm. It's a stressful time for everyone at the moment but the staff seemed well trained and supported.

ALAN & BRENDA, RETURNING TO THEIR CARAVAN AT TAYVALLICH WITH THEIR DOG **Is a Staycation a new thing for you?**

No, we have our own caravan so we tend to go away every few weeks. It's great fun especially when the kids were younger. This time we decided to have more of a culinary trip and ate the freshest seafood across Argyll.

Who are you travelling with and why?

My wife and our cocker spaniel, Cosmo.

Is this your first time visiting here or have you been to Argyll and the Isles before?

It's not our first time, we've travelled around Argyll quite a bit to places like Crinan, Lochgilphead and Brenda visits a great yoga retreat once a year up near Kilmartin.

What have you done in the last 24 hours?

We've been fishing, visiting the beautiful countryside and going on the most amazing walks with Cosmo around Crinan Canal and through the woodlands. He loved it!

What have you missed most about travelling over lockdown?

We tend to go to the caravan often near to our home in Helensburgh but due to covid we've missed the summer season there and the park closes in winter so we only have a few months left to enjoy this year.

Where do you most want to visit in Argyll that you've not been to before?

We'd love to visit Gigha and later this month I'm going a golfing trip to a small village outside of Campbeltown.

Did you discover a hidden spot or visit any new places?

We discovered a beach north of Oban called Ganavan Sands, it goes on for miles and there was great wee coffee hut and cycle trails.

How did you feel before and after visiting?

As we were staying in our own caravan we didn't feel anxious, I'd say we felt reassured and excited. The journey itself was lovely and we didn't have to spend a lot of money most of the planning went into getting our favourite seafood restaurants booked.

SCOTT & FIANCÉ CARRIE ON A DAY TRIP TO HELENSBURGH, GARELOCHHEAD AND KILCREGGAN **Is a Staycation a new thing for you?**

No, something I do most years. Growing up in the Borders we always used to go north as a family and as I got older just kept on doing the same. A staycation for me is all about adventure with family and friends. Climbing hills, riding my bike, having a drink in the quiet.

Who are you travelling with and why?

I recently took a day trip with Carrie, my fiancé, to escape the city post lockdown.

Is this your first time visiting here or have you been to Argyll and the Isles before?

I've been before. We often pass through as Carrie is from Fort William but we don't often stop. I have been to Jurafest and explored most of the mainland but still have a few isles left to check off.

What have you done in the last 24 hours?

We first headed up through Helensburgh to Garelochhead - a road we had travelled before but we had never been round towards to Kilcreggan. So we made a left with no real plan. As we are in lockdown we had packed a lunch, flask of tea and some of Granny's homemade shortbread/empire biscuits. We drove around admiring the coastline until we found a quiet bit to stop at Cove. We ate our lunch and admired the view and searched for some seaglass. We then continued round and north to take the mountain road over Glen Douglas which we had not done before. We stopped at the top and jumped out for a walk to eat Granny's biscuits and have a cup of tea. We joined the Three Lochs Way and climbed to a high point to get the best views of Loch Long and Arrochar. We sat through a shower of rain and when it passed we were met with a stunning view.

What have you missed most about travelling over lockdown?

The wide open space, fresh air and the freedom.

Where do you most want to visit in Argyll that you've not been to before?

Coll and Tiree. I would love to go over to Tiree for the music festival when things return back to normality.

Did you discover a hidden spot or visit any new places?

Coulport Military Base, we knew of Faslane but we did not know about Coulport or the size of the one at Glen Douglas - pretty amazing how much is in this area and pretty well hidden. We also saw the house that was featured in the BBC drama series 'The Nest'.

How did you feel before and after visiting?

We felt we had an amazing wee perfect escape - round that way was very, very quiet. Although that went quickly as we passed down out to Glen Douglas and joined the A82 at Inverbeg. I should have know better for 4pm on a Sunday. But still worth it!

SUZANNE & ASHLEY ON A RELAXING GIRLIE WEEKEND IN OBAN **Is a Staycation a new thing for you?**

I love staycations... love seeing parts of Scotland I've never been to before and love taking our dog with us.

Who are you travelling with and why?

A very good friend for a girlie trip away.

Is this your first time visiting here or have you been to Argyll and the Isles before? Never been before

What have you done in the last 24 hours?

Lovely drive to Oban... seeing the sights and learning about all the places en route. Once we arrived we took a boat trip to see the seals. Was lovely to be out on the water and be told about the islands we passed. Saw some seals sunning themselves. Checked in at the Perle Oban hotel- all very organised and safe. A wee drink in the bar then a delish meal in the hotel. Finished off with a couple of cocktails in the bar. Morning walk to a view point to see Oban below and views of further afield. Before leaving we took a wander around the town - stopping to buy some goodies in the Highland Soap Co. Stopped off at the Crinan Canal and Inveraray on the way home.

What have you missed most about travelling over lockdown?

I have missed a holiday abroad in the sunshine, but we were so lucky with the weather on this trip to Oban, by the sea!

How did you feel before and after visiting?

Before, I wasn't sure what it would be like and unsure what it would be like due to lockdown restrictions. Afterwards, I really enjoyed it lots and would love to go back and explore more.



INVERARAY JAIL

**BUY
TICKETS
ONLINE &
SAVE 15%.**
USE DISCOUNT
CODE - EXTRA










"FANTASTIC" "DON'T MISS THIS ONE!" "A MUST SEE"




[WWW.INVERARAYJAIL.CO.UK](http://www.inverarayjail.co.uk)





WE MISSED YOU!
 All the staff and board at the cinema would like to thank everyone who kept in touch and supported us throughout lockdown. We are very excited to be reopening this August.

Due to the ever changing guidance surrounding cinemas and COVID-19 we would strongly advise that all visitors/customers heed the advice from the Scottish Government guidelines.
You can find additional information on our website.

Guidelines to keep everyone safe:
 -2 metre social distancing must be maintained at all times. Including in the screen. Please sit in the seat shown on your ticket.
 -Face masks/coverings must be worn in the foyer, and while entering and exiting the screen.
Expected changes by the time we open:
 -Masks may be removed once seated, allowing snacks & beverages to be consumed in the screen. TBC...

We are taking steps to ensure the safety of both staff and customers. When you arrive you will notice a few changes. There will be hand sanitising stations throughout the foyer, as well as screens across the box office/concessions desk to protect staff and customers alike. You will be asked for your name and phone number, this is in order to ensure everyone can be contacted as part of the governments Test & Protect strategy. All staff have been trained, and will be cleaning all facilities regularly. Seats will be allocated to you, please sit in the seat number on your ticket. This will help us separate everyone safely to maintain a distance of 2 metres. See you soon!

See what's on and all the safety precautions we are taking at www.obanphoenix.com

OUTSIDE EDGE

There is so much!



Tel: 01631 566617
6 MacGregor Court, Oban

Web: www.outsideedgeoban.com
Email: outside.edge@btconnect.com





TOO MUCH OF LOCKDOWN - COME AND GET LOCKED UP IN JAIL!

We are welcoming visitors again and look forward to seeing you. Whilst you may not actually get locked up.... we've been working hard to make sure that you'll still have a great visit by adapting a number of things to help keep you safe.

Your Jail and Courtroom visit will now follow a marked route, you are free to go at your own pace, family groups will be kept together and we encourage social distancing with our easy-to-follow signage throughout the Jail and Courtroom.

Our audio tour guide, taking you deep into the past with evocative sounds, stories and courtroom dramas, can now be downloaded onto your own smart phone by simply scanning the QR code. This tours you around the attraction along with our own costumed guides who will be on hand to help with your visit. We've had to restrict a couple of interactive exhibits – you'll need to wait a while before the whipping table returns!

ADDITIONAL SAFETY MEASURES:

- contactless payment system
- capacity limit set to ensure distancing
- hygiene screens in all visitor contact areas
- enhanced cleaning, disinfecting of high frequency touch points, door handles, rails etc
- covid-19 specific staff training





Whilst we have made every effort to keep you safe, we need you to do your bit too, so please respect other visitors and our staff by following the current Scottish Government Covid 19 guidelines, keep socially distanced, use the hand gel sanitiser and be kind to other visitors who may be more nervous than you about re-emerging after lockdown.

Thank you and enjoy your visit!

OPEN EVERY DAY - 10.00AM
WITH LAST ADMISSION AT 4.00PM
(CLOSING AT 5.00PM.)

Save money, buy your ticket online
 – 15% discount – use code 'EXTRA'

13 ENSUITE ROOMS
'500 YEAR OLD MALT WHISKY BAR'

Picturesque, family run Highland Inn on the shores of the Sound of Islay, The oldest licenced premises on Islay. Our Starboard restaurant is open all year round to non residents serving Argyll meats and fresh seafood from the daily landings.

Our seasonal bar menu offers everything from light snacks to lobster lunches

www.portaskaig.co.uk
Tel: 01496 840245

Murray

Smoked Products

The **PLAICE** for **FRESH & SMOKED** Fish

Stocking a wide variety of Fresh Fish/Shellfish & Award winning Smoked Fish daily






From all of us at Murray Smoked Products, We would like to thank all of our customers who shopped local and supported us throughout the pandemic. We are now back to our normal hours and we very much look forward to seeing you all soon.

TUES-FRI: 8.30-4.00 SAT: 8.30-3.00 SUN/MON: CLOSED

Shop:
 28 Argyll Street
 Lochgilphead
 PA31 8NE
 Tel: 01546 600262

sales@murraysmokedproducts.co.uk
www.murraysmokedproducts.co.uk

Smokehouse:
 Ford
 By Lochgilphead
 PA31 8RH
 Tel: 01546 810257





AITC GOING THE EXTRA MILE

"From Monday 23rd March 2020, AITC's mission has been to ensure the industry, we are all so passionate about, survives - with the safety of our guests and our wonderful teams at the heart of navigating a safe pathway forward.

Our Covid-19 WhatsApp group has over 130 subscribers from industry, many feeding in daily on their experiences, comments, concerns, support and humour, vital during these really uncertain times and a boost to us all during the dark days I'm sure we have all had.

With weekly Zoom meetings with our directors, government ministers, the Argyll Resilience Forum, the Scottish Tourism Alliance, CalMac and our neighbouring DMOs we have been nimble in making sure that we have a joined up narrative informed by our business communities and making sure the facts are being heard and will continue to be. Through our networks we have managed to collate an online business porthole with over 940 entries on who's open and who may not be ready yet so visitors can make informed decisions.

It's been and continues to be unprecedented times - and it's our spirit of collaboration that is fuelling our recovery plans."

Iain Jurgensen,
Chair, Argyll and the Isles
Tourism Cooperative



GOING THE EXTRA MILE FOR OUR BUSINESSES, WITH OUR BUSINESSES

From small independent retailers to large hotel groups, and tour companies to food and drink producers, we all make it our business to help and support each other, especially in a time of need.

Q&A WITH JANET FROM TENTS & EVENTS

Janet opened Tents & Events, in Dunoon in 1998 and this year has been like no other with no events able to take place since the end of March, which is the core of their business - but is very much looking forward to 2021!

How have you gone the extra mile during lockdown or post-lockdown?

We've been busy helping out Argyll & Bute council with local food distribution and also with NHS in providing secure structures for the drive through test centres.

What have you missed most about not being open over the past months?

We miss the buzz from doing all the different types of events and weddings.

What have you learned about your community during this time?

The community has really come

Read how our business community have come together during lockdown, so we can survive to serve our communities and visitors now and in the future as we work through this pandemic.



Dunoon from the sky

together during this to provide excellent services for those in need, in particular the food hubs.

What do you love most about living and working here?

It's a beautiful part of the country, if not the world, and we're so fortunate we get to experience it everyday, from our doorstep. The pace of life here is something I much prefer over somewhere like the city.

Any special stories about someone or a business in your

area that has gone that extra mile during lockdown that makes you smile?

Burgh Halls in Dunoon have really gone that extra mile in providing a 'community hub' for everyone. They've completely transformed their venue to be able to support the food distribution needed for the greater areas.

Three words to sum up how you're feeling now that we're out of lockdown?

Events need supported.



CHAT CHAT CHAT

AITC used WhatsApp Group Chat, Zoom meetings, emails and good old phone calls to keep our business community connected!

Before you travel that extra mile check where is open and when at go.wildaboutargyll.co.uk



Inveraray Castle and Loch Fyne

Q&A WITH LAURA FROM ARAY FISH WITH FYNST FISH

Fynst Fish & Aray Fish are two separate companies from the same family roots, sharing industrial premises together, and came together like never before as a result of lockdown. Before Covid-19, each business offered a traditional weekly 'door to door' service where customers on our regular routes would come to the van at their homes or at stances dotted around the countryside. Fresh fish, fruit and vegetables directly from Blochairn Market were purchased and sold to our long serving, loyal customers weekly.

How have you gone the extra mile during lockdown or post-lockdown?

We had to think quick to reach

our customers in a safe and contactless manner. We closed for three weeks to plan and re-think our diversification process.

Our relatives in Dumfries & Galloway with similar business style had come up with a user-friendly platform selling online so from careful advice from them we cracked on! This brought a whole new way of purchasing for us and, of course, a new-found method of buying for our lockdown customer. We shared considerable expenses for the set-up of this ambitious transformation, some of which are still on-going to continue to adhere to changing regulations.

We also had to re-think packaging, transport, routes and how we could help customers with no access to Internet. We found Facebook was a useful way of targeting traffic directly to our new websites. Images and new product lines had to be devised quickly and we literally set the whole lot

up in a matter of days then hoped for the best.

What have you learned about your community during this time?

They have been amazing! As key workers, we experienced the fear of the pandemic ourselves but the community support kept us going. The message 'shop local' really has been embedded in the minds of locals since March and we have seen neighbours helping each other. Family members waving to elderly relatives at windows and everyone has really supported each other through to this stage. Customers appreciated our efforts to transform our trading method and we greatly appreciate their loyalty even as lockdown lifts.

Three words to sum up how you're feeling now?

Motivated, Hopeful & Glad

We have seen a real change in local attitudes towards shopping locally and we hope this continues going forward. Now that the tourism industry is picking up we are starting to promote our services to holiday homes, caravan parks, self-catering outlets and B&B's, as visitors to Argyll could also benefit from the premium quality produce we deliver.



Highlands and Islands Enterprise
Iomairt na Gàidhealtachd 's nan Eilean

"With proximity to the central belt and an outstanding natural environment, Argyll and the Isles has always been an attractive visitor destination, particularly for staycations and adventure tourism.

The tourism sector has however been among those hit hardest by the pandemic, particularly as it's coincided with peak seasons.

When the country went into lockdown, we at Highlands and Islands Enterprise (HIE) immediately switched to home working and focused on working with other agencies and local authorities to distribute Scottish Government support as quickly as possible.

Initiatives such as the Creative, Tourism and Hospitality Enterprises Hardship Fund, the Pivotal Enterprise Resilience Fund and the Supporting Communities Fund have now brought millions of pounds to the region.

Businesses also responded to the crisis. We've seen some great examples of firms adapting to changing demands and many that closed initially have since reopened after implementing appropriate safety measures.

With restrictions easing, there is now a great deal back on offer for visitors to Argyll and the Isles. In welcoming people back to the region, we all share responsibility to make sure products and services are offered and received responsibly. This will help bring about the wider recovery we all want to see."

Morag Goodfellow,
Area Manager, Argyll and the Isles,
Highlands and Islands Enterprise



A FLAVOUR OF WHAT'S TO COME

Are you ready to experience and relish a taste for Argyll and the Isles? Five new taste trails are being launched this summer so you can enjoy the area's amazing local produce, visit producers and learn more about why our food and drink is so special.

There really is something for everyone. If you have a sweet tooth, or love freshly caught seafood, have a hankering for vegan delights or want to indulge in farm produce, there is a trail to tantalize you.

Argyll & the Isles is a world-class food and drink destination, attracting gourmets from across the globe. The land and sea offer up the finest seafood, game and meat, while producers create a range of artisan products from preserves and chocolates to hand-roasted coffee. There are so many ways you can experience this great foodie tradition, from the array of restaurants and cafés serving up local produce to distillery tours, food and drink tastings and farmers' markets.

Go wild and plan your adventure at wildaboutargyll.co.uk

#wildaboutargyll

"Since lockdown, there has been such a big push on eating local and supporting local business. We're so lucky to have so many amazing food producers here which meant we didn't have to make continuous trips to the supermarket."

Eve, Argyll Coffee Roasters



The Seafood Trail

Argyll's Atlantic waters and sea lochs deliver bountiful fresh fish and shellfish. Nothing beats tucking into a fresh seafood platter while watching the fishing fleets land their catch in the harbour. The Boathouse on Gigha and Skipness Seafood Cabin on Kintyre and Café Fish on Mull are just some of the great places to enjoy Argyll's seafood served up with stunning coastal views. Argyll has a long tradition of fish smoking. The region is home to over ten smokehouses, some with visitor centres where you can watch the process... an experience you'll want to share with others!



The Spirits & Beer Trail

Argyll is famed for its single malt whiskies, with 14 distilleries dotting what's known as the 'whisky coast'. There's nothing quite like sampling the product in the region's historic distilleries and most offer guided tours ending with a large dram. There are some cracking craft gin distilleries too. Visit Beinn an Tuirc Distillery on Kintyre to see how Kintyre Gin is made. Hand-crafted ales are produced all across Argyll. Fyne Ales Brewery at the head of Loch Fyne is a great place to visit. Enjoy a brewery tour followed by a pint in the courtyard... a great life pleasure!



The Coffee & Cake Trail

Coffee and cake should be part of any good holiday. Whether you're on a long-distance cycling adventure or strolling around a fishing village, you'll always be able to find great coffee and delicious home baking in Argyll. The area is undergoing a bit of a coffee renaissance, with no less than four specialty coffee roasters in the region supplying high-quality coffee to local cafés, restaurants and hotels. Tea is even being grown in Argyll, make sure you bag some!



The Vegan Trail

Vegans are well catered for in Argyll with a dedicated vegan B&B, Kingsreach in Kilmartin Glen, plus a plethora of vegan friendly establishments offering up great vegan food as key dishes on their menus. Cafés, hotels, restaurants and B&Bs across Argyll are constantly adding vegan food to give visitors an exciting choice, and they're often sourcing great local produce and foraged ingredients to do it... we make vegan choices a way of life.



The Farm Produce Trail

Argyll's hills and pastures provide some of the best meat and game in Scotland. Kintyre, Islay, Bute and Mull, where livestock feed on lush, herb-filled pastures. This prime, quality, slow-grown, local meat features on menus throughout Argyll. The Argyll hills are also home to many thousands of deer, so venison is another local delicacy. Kintyre, Gigha and Mull are famed for their milk, which is crafted into delicious dairy products, including cheese and ice cream... what better place to indulge!

GOING THE EXTRA MILE WITH EVENTS IN 2020

Sponsored by

With most of our planned events for this year cancelled or postponed, we're delighted that some can still go ahead! They may take on a different format, but they are happening and you are most welcome to join!

Check out dates, book online and plan ahead.
Keep up-to-date with info as it changes at
www.wildaboutargyll.co.uk/events-and-festivals

Mull of Kintyre Virtual Music Festival
19th-23rd August
www.mokfest.com

ArtMap Argyll Open Studios
21st-24th and 29th-30th August
www.artmapargyll.co.uk

From Hel'n Back Race, Helensburgh
12th September
www.facebook.com/fromhelback

Cowal Open Studios
25-28th September
www.cowalopenstudios.co.uk

Carradale Music Festival
16th-17th October
www.facebook.com/CarradaleMusicFest

Coll & The Cosmos
17th-18th October
www.collbunkhouse.com/dark-skies-coll-cosmos

New Year Dips
1st Jan 2021
Helensburgh (Rhu Marina)
Tighnabruaich (Kames Hotel)
Campbeltown (Dalintober)



A TOTAL
OF 700
PEOPLE AND
230 CARS
ATTENDED IN
TOTAL

DRIVE IN CINEMA, DUNOON WAS A HUGE HIT

A hugely popular drive-in cinema, held as an unofficial celebration to mark the end of lockdown in Dunoon, looks set to be repeated at Halloween.

Colin Moulson, manager of Dunoon BID, said the uplifting community event - the first of its kind - had been so well received that the collaboration of partners involved wanted to do so again. A total of six films were shown over the weekend of July 18-19, from family-friendly classics such as Lion King, Toy Story and Labyrinth. The weekend came to a close with Abba singalong special 'Mamma Mia' - which hit all the right notes.

Spectators parked before the giant screen at the Old Gas Works and tuned in over car radios for a singalong of some of the Swedish supergroup's greatest hits. A total of 700 people and 230 cars attended in total and the community spirit was 'palpable,' generating a buzz across Dunoon long after the credits rolled, said Mr Moulson. For the time being at least, he is keeping schtum about the likely films to be shown at Halloween, but said the success of the first event had created a real appetite to do so again. Now in its second, five-year term, Dunoon Business Improvement District has been working on a programme of events to draw people to the town with upto eight a year before the pandemic struck.

SAVE THE
DATE FOR
NEXT
EVENT AT
HALLOWEEN!



GET READY
FOR OVER 20
EVENTS
IN 2021!

WEST COAST WATERS BATON RELAY 2021

The West Coast Waters Baton Relay, sponsored by The Scottish Salmon Company will take place in 2021, setting off in May on its travels from Glasgow, throughout all of the west coast as far as the Outer Hebrides and return back, not missing out any place on its way. Check out the epic journey at www.westcoastwaters.co.uk/batonrelay



Tim, Ranger
Loch Lomond & The Trossachs
National Park Authority

We hate litter. Everyone else does too.

35,000 6,000

Willie Can't understand people who want to go to a beautiful place then trash it. Shocking.

Claire Just be a responsible adult and clear up your crap.

Ken Utterly inexcusable behaviour.. Fries my noggin!!

Valerie Why do people want to destroy things that give so much pleasure to others? 🤔

Erin Don't leave a mess behind! This breaks my heart

Ryan selfish eejits!

These quotes are just some of the 16,500 comments left underneath a Facebook post shared and seen by more than 977,000 people.

TAKE YOUR LITTER HOME

Love it like a local

LOCH LOMOND & THE TROSSACHS NATIONAL PARK

RESPECT YOUR PARK.

Sponsored by

LOCH LOMOND & THE TROSSACHS NATIONAL PARK

"Littering and flytipping have never been welcome in the National Park, but since lockdown started to ease we have seen some incredibly devastating scenes where a minority of visitors have decided that it's OK to trash beauty spots and special places. Our ask is simple: we want people to love the National Park like a local and show this by either binning their litter or taking it home."

Nik Turner, our Litter Prevention Manager.

GOING THE EXTRA MILE

Respect the latest guidelines

Plan and book ahead

Be considerate

Get off the beaten track

Say hello and share a smile

Sustainable tourism focuses on long-term change in tourism practices tackling a long list on possible impacts whereas **responsible** travel focuses on short-term actions every one of us can take every day to have less of a negative impact on a given destination and increase positive ones.

Now more than ever responsible travel is our mantra here in Argyll. Our businesses, staff, communities and agency partners each have their part to play - and our simple ask of all our valued visitors is to support us by simply following the steps above.

SHOP TO SHIP

Sail Scotland

Calling all sailors and boaters! Place your orders here
www.sailscotland.co.uk/shop-to-ship
#RespectTheDestination

SHOP TO SHIP

The Sail Scotland Shop to Ship web-based platform aims to better connect local businesses with visiting leisure crafts, yachts and cruising vessels and help boost local trade.

The new scheme promotes the purchase of local seafood, fresh food, arts and crafts but importantly in a manner that in light of Covid-19 respects the wishes of communities regarding visitors stepping ashore at destination ports, anchorages and harbours.

The portal promotes a range of produce including: Beer wines and spirits, Local Seafood, Fresh Foods, Meats, Bakery, Dairy, Takeaway, Groceries, Household, Arts, and Crafts.

The further easing of lockdown will allow yachts and boats to visit remote areas and island communities. The Safe Sailing Guidelines published by Sail Scotland as part of the national framework for a recovery in tourism asks visiting yachts to Respect the Destination by planning ahead, making a considered arrival and thinking local. Sail Scotland recognised that no two destinations are the same, so the platform aims to connect the producer and the consumer as easily as possible in a way that suits local wishes.

The Shop to Ship campaign will be promoted widely by Sail Scotland, Scotland Food and Drink, destination groups and user social media channels to the rural business network and marine tourism users.

For more information contact Alan Rankin Chief Executive Officer Sail Scotland 07704 010792 alan.rankin@sailscotland.co.uk

The platform is available for businesses to register at www.sailscotland.co.uk/registration

SHOP TO SHIP

Sail Scotland

#ShopToShip Marketplace

Sell direct to visiting yachts, cruise boats and leisure craft

Getting Listed

If you are a supplier of products listed above and can take an order and payment online or over the telephone and can supply to a designated collection point you can register your services at <https://www.sailscotland.co.uk/registration>

- ✓ Beer wines and spirits
- ✓ Dry Groceries
- ✓ Fresh Foods and Meats
- ✓ Seafood ✓ Bakery ✓ Dairy
- ✓ Takeaway ✓ Household
- ✓ Arts and Crafts

Upon approval, businesses will be able to self-edit a business page to promote product for sale, price, terms that visiting yacht crews can safely purchase and collect from designated local pick up points.

Local arrangements will be directly confirmed by the supplier, but are expected to be around:

The yacht will contact the supplier, place the order, pay and give the supplier an estimated time of arrival.

Yacht will confirm safe arrival when anchored or moored.

The supplier can then deliver to the designated safe pick up point and advise yacht of delivery.

Once the supplier is clear of the area the yacht can send crew over by tender to collect the goods from the safe zone and then immediately return to the yacht.

Arrangements will differ from place to place and yacht crews must at all times #RespectTheDestination and supplier should liaise with the local facility manager to agree the safe collection point.

During the remainder of the summer, restrictions may remain around access to remote locations and island communities.

In response to the Covid-19 pandemic Sail Scotland is opening a **FREE web directory** within www.sailscotland.co.uk to enable shore-based producers to gain valuable business through the sale of goods to visiting yachts and pleasure craft.

Shop to Ship integrates with the principles within The Safe Sailing Guidelines as part of the National Framework for a recovery in tourism and the recent generated campaign **#RespectTheDestination**

AGRITOURISM – WHERE FARMING MEETS TOURISM



With such rich farm land and local producers throughout Argyll, on the mainland and the islands, we also have a healthy agritourism sector, which is the marriage of tourism with farming. It really is all about bringing visitors to their farms to stay, to eat, to drink, to buy or to do some fun activities!

Four of our Go Rural agritourism businesses tell us more about what they have each been doing during lockdown, what they love about what they do and how things are shaping up this summer.

Q&A WITH SUE FROM ARDARDAN ESTATE, NEAR HELENSBURGH

When did your farm diversify into tourism and in what way?

We've been here for 22 years and originally started as poultry farms, we sold eggs and had a small shop, which has developed into a larger shop/deli, garden centre and café. Our next step is the farm park attraction - which is still to come!

How has this benefited the farm as a business overall?

We wouldn't be where we are if we hadn't diversified the farm. Unfortunately, the farm on its own isn't justifiable, moving into the tourism sector has been a main part of our income.

How did lockdown impact on the tourism aspect of your business?

We essentially came to a halt but managed to keep the shop opened partially, and provide deliveries to locals.

Tell me about the GoRural live farm visit?

It's awesome! Caroline and the team have been so valuable to us. We saw that the site was getting lots of traction and interest so it was great to be able to show what we do. Everybody's business is different and you can learn so much from each other.

How are things going now lockdown is lifting?

We've reopened our café and have converted our outdoor sheds into further seating areas.

I think it's so important to have a focus on the mental health aspect as well, for both your visitors and staff, it can be a stressful time for lots of people.

Have you changed anything as a result of lockdown which you'll continue with?

We've started to provide more fruit and vegetables as we're seeing lots more people buying fresh products. We've also started offering takeaway coffee and cheese tasting boxes.

What impact does your business have in the community?

When we first came here it was derelict so it's really brought it back to life. I'd like to think we are an integral part of the community with all the work we do with the locals and schools. And hopefully we've brought people to the area, that perhaps haven't visited before.

Q&A WITH KAY FROM LENNOX OF LOMOND, LOCH LOMOND

When did your farm diversify into tourism and in what way?

We have over 5,000 acres and hill sheep farming is a long process, so we needed ways we could diversify and push into new sectors. Around 1972 my gran started to do self-catering which is when Lennox of Lomond started to branch out. We run tours, accommodation and have now started to provide quadbike trail tours - no one else has done this yet here!

What part of tourism do you love the most?

Meeting people. I was always taught from a young age to communicate with people. It's great to see how interested people are in meeting the farmers and grounds that date all the way back to the 1750's.

How did lockdown impact on the tourism aspect of your business?

Greatly. We have no government funding so we had to support ourselves. It was difficult as a lot of the money we made was getting reinvested into the farm. It also affected the farming industry with wool severely losing its value. On a more positive note, it gave us headspace to re-evaluate and support other businesses.

Tell me about the GoRural live farm visit?

It's been incredible and a great teaching platform. For us, we were trying to find a new brand for the farm so we were able to have weekly meetings, which we found so helpful. There were 14 days of live Lambathon tours across the world showcasing different farms.

How are things going now lockdown is lifting?

We started to take bookings again around the end of June, so a lot of accommodation is now fully booked. We're finding that people are really seeking more space than ever before. We've got great hills, which sit above Loch Lomond and you get the best panoramic views.

Have you changed anything as a result of lockdown which you'll continue with?

We're looking to pursue all the new ventures mentioned above - I believe we're going to see a surge continuing on into the winter months as people have holidays they need to use up.

Q&A WITH ISLAY FROM KILCHOMAN DISTILLERY, ISLAY

When did your farm diversify into tourism and in what way?

The distillery at Rockside Farm has allowed us to grow and provide our own barley, taking us back to its traditional farm roots. The visitor centre was an integral part of this and allowed us to share our story and to grow the brand.

How has this benefited the farm as a business overall?

The distillery business and the farm business are separate but there is no doubt that the farm benefits from the visitors and we are constantly looking to make improvements to the infrastructure and the soils to ensure that we leave the farm in better condition for the next generation.

What part of tourism do you love the most?

We are very lucky and estimate that we have around 25,000 visitors to the distillery every year. They travel from all around the world to visit Islay and Kilchoman and it's great to see so many people that are enthusiastic about what we do on the farm and the distillery. They appreciate seeing the whole process on site from growing the barley to filling the bottles.

How did lockdown impact on the tourism aspect of your business?

It had a major impact on our business as we closed the visitor centre. We have recently reopened and are delighted to be welcoming visitors back - although the numbers are reduced we see that these are building.

Tell me about the GoRural live farm visit?

We did a video presentation for GoRural, which was a lot of fun to do. We got to highlight the farm and give viewers a virtual tour round the distillery. We were able to share our vision for the future at Kilchoman Distillery.

Have you changed anything as a result of lockdown which you'll continue with?

We have made a lot more use of technology for meetings and we'll probably continue with this in the future.

What impact does your business have in the community?

We employ, locally, around 28 people and use local contractors both at the distillery and on the farm where we possibly can. The visitors that come also provide valuable income to the local hotels, guest houses and shops.

Q&A WITH FRASER & NIKKI, FROM SHELLFIELD FARM, COWAL

When did your farm diversify into tourism and in what way?

Well, we took over the farm 8 years ago and there was no diversifying taking place. We then found an opportunity to sell our lamb and then turned to event catering 4 years in. Since then, we've reinvested in the brand and built our own commercial kitchen and butchery on site.

How has this benefited the farm as a business overall?

We've been able to really get the message out about sustainably farmed meat and have strongly been advocating for grass fed meat. I've also been able to turn my passion of being home cook into my own chef a reality.

What part of tourism do you love the most?

Educating people and showing them our farm is one of our favourite aspects. With veganism continuing to grow, we think it's so important to show our visitors how we are able to sustainably farm and help the environment. I think farms like ours need more representation - there is lots of misconceptions out there about the meat and dairy industry.

How did lockdown impact on the tourism aspect of your business?

Without the events we haven't been able to cater in that sense, but prior to lockdown we were getting ready to launch our very own ready meals, so that worked out well as we've been wanting to do it for a while. It really allowed us to get established with the great local market.

Tell me about the GoRural live farm visit?

We had a really good experience. We showed people around the farm and into our new commercial kitchen. It's been really interesting seeing how other people have diversified their businesses; I think it is these ones that will survive (hopefully!).

How are things going now lockdown is lifting?

Now that we've established our ready meals, it's really becoming a growing market as people are going back to work and we have tourists visiting. Lockdown has given us a realistic view of the local market and we've had a very positive experience.

What impact does your business have in the community?

We're all about provenance, we're spreading the message about good meat and traceability. People are starting to wake up to small local producers who have kept going during all of this - we haven't gone anywhere.

GO RURAL LIVE FARM TOURS BRINGING SCOTTISH FARMING TO NEW AUDIENCES



Scotland's close-knit network of agritourism farmers have reached out to thousands of families stuck at home during lockdown by bringing a live daily virtual tour into living rooms via the Go Rural Facebook page.

Initially started by a few farming friends keen to cheer people up by conducting a daily virtual tour of fourteen different lambing sheds, two weeks of "Lambathon" had then become such a hit with audiences at home, that "Welcome to my Farm" followed on. www.facebook.com/gorural

Sponsored by

Looking after customers is at the heart of our business. Here at NFU Mutual Oban, Campbeltown and Islay we are committed to providing a friendly and professional service to our customers. With insurance, pensions and investments advice. As one of the UK's leading insurance providers, NFU Mutual has been looking after customers for over a century - using our local roots and national presence.



THE WILD ABOUT ARGYLL BIKE PACKING TRAIL

Welcome to Scotland's Adventure Coast. Argyll is a natural playground where islands, forests and woodlands combine with a spectacular coastline to provide an awe-inspiring setting for bikepacking.

WATCH THE VIDEO

It is also home to a temperate rainforest habitat rarer than tropical rainforests, and a very special place for spotting wildlife. The Wild About Argyll Trail provides an amazing adventure on gravel tracks, forest roads, singletrack, roads and cycle paths. At 406 miles it is suitable for gravel and mountain bikes and can be ridden all year round, but the best time to visit is from April to October. And if you are not cycling, there are plenty of opportunities to taste whisky and craft beers, go island-hopping, swim in crystal-clear

water, breathe pure air, watch magnificent sunsets and see starry skies that will take your breath away.

The Wild About Argyll Trail starts and finishes at Helensburgh. Free long-stay car parking is available at the start. The route can also be explored in smaller sections, with good parking facilities in towns and tourist villages and well served by public transport. Scotrail operates frequent train services between Edinburgh

or Glasgow and Helensburgh. Trains also operate from Glasgow to Oban a few times a day, stopping along the route at Helensburgh, Arrochar and Tarbet, Connel Ferry and Taynuilt. There are frequent services from Aberdeen, Inverness, Stirling, Perth and Dundee as well as London and stations in the south to Glasgow. For more detailed information about the route and to download the GPX file for free visit:

bikepackingscotland.com/argyll

Cycling can be dangerous and is done entirely at your own risk. Please adhere to the key principles of the Scottish Outdoor Access Code. Respect the interests of other people. Care for the environment. Take responsibility for your own actions. And have fun!

*Bespoke
Guided
Walks*

*Creating
happy
memories
to last a
lifetime*

Heathery Heights

Leading walks in the Outdoors
www.heatheryheights.co.uk

Bookings being taken now

Tel: 07899 765240

**BECOME
A MEMBER**

In 2020, for £25* any business can join AITC to receive immediate benefits.

For info and to join visit
wildaboutargyll.co.uk/membership

*Monthly subscriptions will not start until 2021

THE MANOR HOUSE

Georgian elegance
on beautiful Oban Bay

Happy to welcome you back. Open for accommodation and dinner

Overlooking the Harbour
Gallanach Road • Oban • 01631 562087
www.manorhouseoban.com

**YOUR WHISKY
JOURNEY
STARTS HERE**

#ScottishWhiskyTrail

**THE NEW APP FROM
CASK & STILL MAGAZINE**

If you are a whisky lover or just want to try the best drams in Scotland then download our free app today and make the most of your time in the home of whisky.

Our new app is your pocket guide to the Scottish whisky scene. Use our interactive map to find the best places to shop, buy and sample Scotland's national drink, all at the touch of a button.

Visit iconic whisky bars, rub shoulders with local whisky experts and get the best advice on how to enjoy your preferred dram.

Above all have fun and remember –
drink sensibly.

Slàinte!

START EXPLORING!
DOWNLOAD OUR FREE APP TODAY

GET IT ON
Google Play

Download on the
App Store

*You must be 18 years or older to purchase alcohol within the UK.

Riverside Filling Station

**Oban Road,
Lochgilphead**

Open 7 days 6am -11pm
Quality Local Produce,
Café - Fresh Hot Food,
Groceries, Calor Gas & LPG

Tel: 01546 603858

Argyll is lucky to play host to both species of British Eagle.



Otters can often be spotted in Argyll with a bit of patience.

NATURE'S PARADISE

Nature has played a new part in our life this year. As the day-to-day pace of life slowed down during lockdown, many of us took notice of the natural beauty surrounding us, just that little bit more – in our gardens, on our daily walks, through our friends and family sharing pictures and the news sharing stories of how nature was thriving.

Sponsored by



NatureScot

Scotland's Nature Agency
Buidheann Nàdair na h-Alba

"Argyll offers a wealth of opportunities for the public to enjoy our great outdoors and with numbers of visitors increasing over the holiday period this can come with some very practical challenges, particularly at popular locations. We are urging members of the public to enjoy the great outdoors safely and responsibly by following the Scottish Outdoor Access Code. This includes planning ahead and avoiding busy places, being kind to nature and each other and respectful of local communities. If you arrive somewhere that looks too busy, try and find somewhere quieter – as you'll see from this publication there are plenty of alternatives available.

Visitors can check ahead on our website in advance, to find out which of our national nature reserves are likely to be less busy and avoid the crowds: www.nature.scot/enjoying-outdoors/scotlands-national-nature-reserves."

Argyll and the Isles is known as nature's paradise. It's taken pride in this accolade for quite some time, and it's not going anywhere. Right here, on the doorstep of central Scotland, communities and visitors can enrich their own well-being through the delights of nature's paradise, which changes by the season and our ever-changing weather!

From daily escapes to longer immersive stays, explore your love of nature, on land and at sea, on the mainland or by island hopping. From white tailed eagles and basking sharks to beavers and barnacle geese, you can see it all if you just go that extra mile and wait that extra moment to seek it out.

OUR NATURE RESERVES & WILDLIFE

A haven for wildlife, Argyll and The Isles has an intimate mixture of land and sea, forest and farmland with huge contrasts in the scale and character of its many landscapes. With such a contrast, this area may hold a richer biodiversity than any comparable area in Scotland!

Home to amazing creatures, large and small

- Golden and white tailed eagles
- Minke whales
- Basking sharks
- Dolphins
- Red deer
- Red squirrels
- Otters
- Seals
- Pine martens
- Choughs
- Corncrakes
- Rare butterflies, moths and dragonflies

Where to look

- Book from a huge range of land and sea wildlife tours
- Hebridean Whale Trail
- 6 National Nature Reserves
- 4 RSPB Reserves
- 4 Scottish Wildlife Trust Reserves
- Range of trails, hides and viewing platforms
- Everywhere and anywhere!

There are many wildlife operators in Argyll and the Isles, especially on Mull and also around Oban and south to Knapdale, on Cowal and on Bute. To find out more and for great tips on spotting wildlife throughout the year visit www.wild-scotland.org.uk



SPOT SCOTLAND'S BIG FIVE SPECIES

Red Squirrels can be spotted in wooded areas on the mainland with great chances of spotting them around Dunollie and Glen Nant near Oban, and within the Argyll Forest Park on Cowal. Pine martens and bats are often spotted in similar places.

Red Deer thrive across the mainland here, but to improve your chances of a sighting take a trip to Mull or Islay. Or better still travel to Jura where there are more than 5000 deer, meaning 250 deer to very person living on the island. Going the extra mile really does reward you!

Harbour Seals can be spotted in coastal waters all around Argyll, often resting on rocks close to the shoreline. But why not up your chances of seeing these interesting sea creatures by getting out in to the water – you may also spot dolphins, porpoises, minke whales or even basking sharks!

Otters are spotted regularly around the coastlines here. Look for the v-shaped ripples extending away from its nose and the flick of its

tapering tail as it dives to distinguish it from a small seal. Otters are often spotted at Taynish.

Golden Eagles are truly majestic creatures and you'll know when you see one. Often spotted around the Isles of Mull, Islay and Jura, around Ben Cruachan and on the Kintyre peninsula. Golden Eagles are much larger than the common buzzard with a wing span of 1.8 – 2.3 metres! And we all know very well now what 2m is!

ALSO IN ARGYLL...

White Tailed Eagles are also common in Argyll and especially on Mull, where they were reintroduced in 1985. Their wingspan can be up to 2.5m and they are much heavier birds with a white tail and square edged wings, whilst golden eagles have a more streamline physique with wings tapering to long feathers.

Beavers are also at home in Argyll - due to Scottish Beaver Trial, and today there is a chance you might spot one at dawn or dusk in Knapdale Forest.

DID YOU KNOW?

42 of the 109 Sites of Special Scientific Interest within Argyll & the Isles have been designated, at least in part, for their woodland (35 for their Atlantic oakwoods). The Argyll area has around 33,100ha of ancient and long established woodland, comprising around 5% of our total land area and including around 17,400ha (3% of land area) which may be semi-natural in origin.



The Red Deer are the largest UK deer.



Keep an eye out for Red Squirrels, a protected species.



Harbour seals can be spotted along the shores of Argyll.



Knapdale Forest

DID YOU KNOW?

Argyll & the Isles is a major source of timber, mainly softwoods, for use in various products including house building, paper making as well as increasingly being a source of renewable energy as wood fuel. Around 12% of Scotland's timber supply is sourced from Argyll's forests. Argyll can be described as the birthplace of the modern day forestry movement with the Forestry Commission's first training school being based at Benmore in Cowal, and experimental plantations taking place on the slopes above the Holy Loch.

OUR WONDROUS WOODLANDS

Wandering has never felt so good as when you roam Argyll's amazing woodlands. Home to some of Europe's most significant ancient oakwoods, one of the finest examples is at Taynish near Tayvallich. Having survived here for over 7000 years, this 'temperate rainforest' is home to a wealth of wildlife. Mosses, lichens and ferns thrive in the very clear air and the mild humid climate of the west coast.

Where to lose yourself in the woodlands

Taynish is a must for peace and tranquillity. The peaceful oak woodlands of Taynish are interspersed with grassland, heath, saltmarsh and shoreline to give a truly amazing variety of wildlife. Admire the spring-time carpet of wildflowers or search out evidence left by a secretive otter as it slips through the wood. A June day on the woodland edge gives you a good chance of seeing the delicate dance of the rare marsh fritillary or the metallic flash of a passing dragonfly.

Glen Nant is to the east of Oban near Loch Awe and is also a National Nature Reserve managed by Forestry Land Scotland. Again the mild, moist climate of the glen and the oak, birch and ash trees that grow there have created a haven for a rich variety of plants, insects, birds and mammals. The wood has a long history of management including a period when the trees were coppiced to produce bark for tanning leather and charcoal for fuelling the iron furnace at Bonawe. If you are in search of natural beauty Glen Nant is a must. Footpaths, interpretation and educational activities help people to enjoy and find out about the richness of the area's natural and cultural heritage.

Glasdrum Woods National Nature Reserve

to the north of Oban on the banks of Loch Creran are truly wild and wonderful. Ash and oak dominate the woodland at Glasdrum, their trunks softened by a thick coat of mosses and lichens which drip water in the moist air. But it's the space around these forest giants that makes this place special. Where sunlight can penetrate between the trees, smaller flowering plants take hold and provide a rich larder for butterflies like the rare chequered skipper. Otters are known to slip cautiously between the woodland and the clear waters of Loch Creran.

Although not a typical woodland, Crinan's Great Moss, the **Moine Mhor National Nature Reserve**, is a remarkable remnant of one of our most ancient landscapes. It began to form over 5000 years ago and once covered a vast area. One of the last raised bogs left in Britain today, it is a bogland showpiece – a wild landscape of hummocks, hollows and pools, interspersed with lonely groups of trees and rich in spectacular wildlife. Best viewed from above, take the time to climb Dunadd or Bellanoch viewpoint.

OUR FABULOUS FORESTS

If you are keen to try forest-bathing, this is the place to do it. Immerse yourself in the captivating height of old trees and rich dense undergrowth. Forests and woodland cover over 30% of the land area of Argyll & the Isles, and as such, we have the highest proportional level of forest cover compared to other areas of Scotland.

A natural place to play and relax

Argyll Forest Park on the Cowal peninsula was the UK's first ever Forest Park designated in 1935, and arguably the best.

Most of the forests in Argyll have been managed for recreation with many paths and biking trails, picnic spots, view points and car parks. These are spread throughout the area and offer facilities suited to all abilities. There are many way marked trails with guidance as to the terrain and length of walk, but also a vast network of forest tracks to be explored on foot, by bike or on horseback.

Our Heritage Trees

Never forget to look up. Argyll & The Isles is home to some exceptional, extraordinary, uncommon and unexpected trees, which are listed in the heritage trees of Scotland, 2006. At Ardkinglas, Loch Fyne the mightiest tree in Europe thrives. The tallest tree in the UK is hotly contested and although Ardkinglas made this claim 5 years ago – sadly our specimen has been outgrown.

The stunning redwood avenue at Benmore Botanic Garden is nearly 300 metres long, 50 metres high and could live for 3,500 years. The Lime Avenue at Inveraray Castle is believed to be the oldest in Scotland dating back to 1650 and with many of the original trees surviving to this day in remarkably good health. An ancient yew perched on a rocky outcrop above Loch Lomond is believed to have sheltered,

Robert the Bruce, King of Scots and his troops, and although the Wishing Tree of Argyll recently died, the remains of this lone wind blasted hawthorn is encrusted with coins pressed into its soft bark by generations of superstitious travellers, each coin representing a wish.

OUR GLORIOUS GARDENS

The heady mix of rocky, indented coastlines shaped by the sea and warm, mild currents of the Gulf Stream, creates an interesting climate and growing conditions for a wide range of plants. Mix with naturally acidic soil and you have the perfect growing conditions for plant life from all over the world.

There was a huge influx of plant material into Argyll in the 19th and 20th centuries with conifers from North America, rhododendrons and magnolias from the Himalayas, myrtles and eucalyptus from Australasia and crinodendrons and embothriums from Chile.

Step into one of our many cared-for gardens and immerse yourself in nature's prettiest greenery and array of colours, combined with utter peace and tranquillity.

The Glorious Gardens of Argyll & Bute showcase excellence in both horticulture and our human love of nature.



Our most loved gardens

- Achamore Gardens, Isle of Gigha
- An Cala, Isle of Seil
- Angus Garden, Barguilean, Taynuilt
- Ardchattan Priory Garden, by Oban
- Ardenraig Garden, Isle of Bute
- Ardkinglas Woodland Garden
- Ardmaddy Castle Garden, by Oban
- Ardtornish Garden, Morvern, by Argyll
- Ardraine Garden, by Oban
- Ascog Hall Fernery and Garden, Isle of Bute
- Benmore Botanic Garden, Dunoon
- Crarae Garden, Inveraray
- Geilston Garden, Dumbarton
- Glenarn Rhu, Helensburgh
- Inveraray Castle Garden, Inveraray
- Iona Hotels Gardens, Isle of Iona
- Kinlochlaich House Garden, Appin
- Linn Botanic Gardens, Cove by Helensburgh
- Mount Stuart, Isle of Bute

www.gardensofargyll.co.uk

WHAT MAKES ARGYLL NATURE'S PARADISE?



Over 3700km of coastline



Numerous sea lochs penetrating the mainland – some up to 50km long



All settlements are within 10km of freshwater lochs or the sea



Scotland's longest freshwater loch – Loch Awe



Rocky coast and impressive cliffs



Unlimited shingle and sandy beaches



More land dedicated to forestry than other areas of Scotland



Home to some of Europe's oldest oakwoods



Gulf Stream weather and mild sea climates



Very fresh clean air



Rich marine ecosystem with strong Atlantic sea currents



Significant remnants of the temperate rain forest

For up to date information on which Forest and Land Scotland facilities are now open visit forestryandland.gov.scot/covid

Sponsored by

LONG DISTANCE TRAILS

If you love getting outdoors and up close and personal with nature, then long distance walking, cycling or kayaking is the best way to explore and scour Scotland's adventure coast.



LONG DISTANCE WALKING

Get your boots looked out, weather-proof gear packed and sunscreen at the ready. When walking you need to be prepared for all weathers, no matter the season, so plan ahead and bring it all. If you're in luck you might get all four seasons in one day!

The Loch Lomond & Cowal Way

Established at the turn of the century and 91km (57 miles) long, this route stretches from Argyll's Secret Coast to the bonnie banks of Loch Lomond. The Cowal peninsula is rich in wildlife and scenery, typified by the stunning seascapes of the Kyles of Bute, and the spectacular mountains of the 'Arrochar Alps'. Add to these, the clan histories and ruined castles of the Lamonts, the Campbells and the MacLachlans together with the numerous standing stones, burial cairns and rock carvings from the Stone Age and Bronze Age eras, and Cowal becomes a visitor's paradise. Plan your walk at www.lochlomondandcowalway.org

The Kintyre Way

Stretching from Tarbert at the north end of Kintyre, to Dunaverty Bay in the south, the Kintyre Way criss-crosses the peninsula and is easy to navigate with markers along the way. This 140km (87 miles) long trail connects communities, landscape, people and produce. With hidden coves, deserted beaches, tiny fishing communities, gentle hills and tasty local produce, you will always experience a warm friendly welcome. Plan your 4-7 days worth of serious hiking and gentle rambling at www.thekintyreway.com

The Three Lochs Way

The long distance walking gateway to Argyll and the Isles, linking Loch Lomond, the Gareloch and Loch Long via Balloch, Helensburgh, Garelochhead, Arrochar and Inveruglas.

Highlights include Rennie MacIntosh's Hill House, the glorious gardens of Helensburgh, atmospheric Glen Fruin and tremendous views of the Arrochar Alps. Rarely rising above 250 metres, the 55km (34 miles) walk offers plenty of options for shorter day walks or a fully linked trail. Plan your way at www.threelochsaway.co.uk

The West Highland Way

This 154km (96 miles) route starts at Milngavie passing through Mugdock Country Park, then follows the shores of Loch Lomond, passing Ben Lomond, through Glen Falloch and Strathfillan, dipping into Argyll before crossing Rannoch Moor, past Buachaille Etive Mor to the head of Glencoe. It then climbs the Devil's Staircase, descending to sea level to cross the River Leven at the head of Loch Leven before entering Lairigmor and Glen Nevis, and finishes at Gordon Square in Fort William. Join the popular trail and company of fellow walkers by planning at www.west-highland-way.co.uk

The West Island Way

Running the full length of the Isle of Bute for approximately 40km (25 miles), the West Island Way embraces a variety of landscapes; seashore, moorland, farmland and forest. The natural history, geography, geology and ancient history of the island are revealed at every turn. Plan your way at www.visitbute.com

The John Muir Way

A new trail addition in 2014, and at 214km (134 miles) this coast to coast route runs across central Scotland between Helensburgh in Argyll in the west and Dunbar in the east, passing through the very best scenery the central belt has to offer. Designed to be easily accessible to a wide range of users and close to local communities and transport links, find your way at www.johnmuirway.org



LONG DISTANCE CYCLING NETWORK

Campbeltown to Fort William – the Caledonia Way

National route 78 of the National Cycle Network – known as the Caledonia Way – runs from Campbeltown to Inverness via Oban, Fort William and Fort Augustus.

Dunoon to Portavadie/Tarbert

National route 75 of the National Cycle Network connects Leith with Portavadie and Tarbert via Edinburgh, Glasgow and the ferries between Gourock and Dunoon.

Helensburgh and Lomond Cycleways

The Helensburgh and Lomond cycleways are part of the National Cycle Route 7, which runs from Sunderland to Inverness, via Penrith, Carlisle, Dumfries, Ayr, Glasgow, Pitlochry and Aviemore.

Balloch to Tarbet –

West Loch Lomond Cycle Path

This 17 mile cycleway and footpath takes you from Balloch at the southern tip of Loch Lomond to Tarbet. The path is traffic free for most of the way, with only 2 short stretches on minor roads. It is suitable for cyclists, walkers, wheelchair users and horse riders.

www.sustrans.org.uk



THE ARGYLL SEA KAYAK TRAIL

With over 3700 kilometres of coastline, Argyll and the Isles claims some of the UK's most beautiful and naturally diverse seascapes. The 153km (95 miles) sea kayak trail has nine access points linking Helensburgh in the east, through to Oban in the north offering some of the best coastal kayaking in Scotland.

www.paddleargyll.org.uk

Access Points

- Ganavan
- Arduaine
- Crinan
- Ardisaig
- Tarbert
- North Bute
- Toward
- Dunoon
- Helensburgh



Cycling, Dunollie Castle, Oban.



The Caledonia Way, Cycle Touring Routes (Image credit John Linton).

EXPLORE ARGYLL'S MOST DRAMATIC LANDSCAPES ALONG THE CALEDONIA WAY

Feature by Sustrans

Some of Argyll's best known cycle touring routes and day trips are being promoted through a new online journey planner hosted by VisitScotland, as part of a nationwide campaign to get people to explore Scotland by bike. Created in partnership with Sustrans Scotland, the planner aims at encouraging visitors to Argyll and Bute through cycling day trips or longer challenges, such as the iconic Caledonia Way.

Running between Campbeltown and Inverness, the Caledonia Way is a 'coast to coast' cycling adventure, through spectacular highland landscapes rich in culture and history.

Heavily influenced by Scotland's iconic geography, the route follows both the Kintyre Peninsula and the Great Glen. It passes under the shadow of Ben Nevis and traverses Loch Ness, providing unrivalled views of famous castles and west-coast islands.

In Argyll, the route passes some of Scotland's most iconic landmarks such as the Neolithic stone circles in Kilmartin Glen, the ancient 'Coffin Road' through Glen Lonan, and the instantly recognisable silhouette of Castle Stalker.

From the challenging moorland hills of the Kintyre Peninsula, to lengthy sections of family friendly traffic-free path along the historic Crinan Canal, the Caledonia Way offers something for every type of cyclist! And, despite some of the spectacular remote rural cycling on offer, this route is very accessible, making it simple for riders to complete shorter sections if required.

"With cycle tourism estimated to be worth up to £345million to the Scottish Economy (Sustrans Scotland (2017) Leisure Cycle Tourism Guide), the move is part of a campaign to encourage Scots to discover more of what's on their doorstep as the country emerges from lockdown."

Sustrans' new, targeted approach to promotion of cycle touring will give more of Scotland's businesses and communities the opportunity to capitalise on the rapid growth of green and sustainable tourism, whilst encouraging visitors to enjoy some of Scotland's most dramatic landscapes, in a responsible and sustainable way. www.visitscotland.com/cyclingroutes

Sponsored by

CASTLES & MONUMENTS

Track time and history by visiting the wealth of prehistoric monuments and medieval forts and castles located throughout Argyll and the Isles. Learn about our predecessors and adversaries – and how our built heritage shaped the west coast and our connections with the rest of the world. The richest of history to be enjoyed today.

Argyll and the Isles is unbelievably rich in prehistoric sites with Kilmartin Glen in the heart of Argyll having one of the densest concentrations in the UK with over 800 sites within 6 miles! Also, many of these prehistoric sites across Argyll & the Isles have no visible remains above ground with some having been excavated and others still to be. Here are just some of the more important ones that you can visit.

Please note listed sites are protected by law, please respect these treasured places when you visit by adhering to any signs you see and follow the Scottish Outdoor Access Code.



OUR PREHISTORIC SITES TO VISIT

- Shell Middens, Mesolithic rubbish heaps perhaps 9,000 years old, Isle of Oronsay
- Glecknabae, Mesolithic shell midden and Neolithic chambered cairn, Isle of Bute
- Brackley, Neolithic chambered cairn, Kintyre
- Beacharra Neolithic chambered cairn, Kintyre
- Lochbuie, Neolithic/Bronze Age stone circle, Mull
- Cultoon, Bronze Age, standing stones circle, Islay
- Strontoiller, Neolithic/Bronze Age standing stone/cairns, Lorn
- Dunagoil, Late Bronze Age/Iron Age Vitrified Fort, Isle of Bute
- Kildonan, Iron Age Dun, Kintyre
- Tirefour, Iron Age Broch, Isle of Lismore
- Druim an Dun, Iron Age and Early Historic Dun, Knapdale
- Dun Eibhinn, Iron Age Dun, Isle of Colonsay
- Dun Nosebridge, Iron Age Fort, Isle of Islay
- Dun Mor Vaul, Iron Age Broch, Isle of Tiree
- Castle Dounie, Iron Age Dun, Knapdale
- Kilmartin Glen
 - Neolithic-Bronze Age cairns/standing stones
 - Nether Largie South chambered cairn
 - Templewood stone circles
 - Kilmartin Glen Linear Cemetery

- Dunchraigaig, Neolithic - Bronze Age, standing stones/henge/cairn/cup markings
- Achnabreck, Neolithic Rock Art Site
- Cairnbaan, Neolithic Rock Art Site
- Dunadd Hill Fort, Kilmartin Glen, Iron Age Early Historic seat of the Kingdom of Dál Riata



OUR MAJESTIC CASTLES

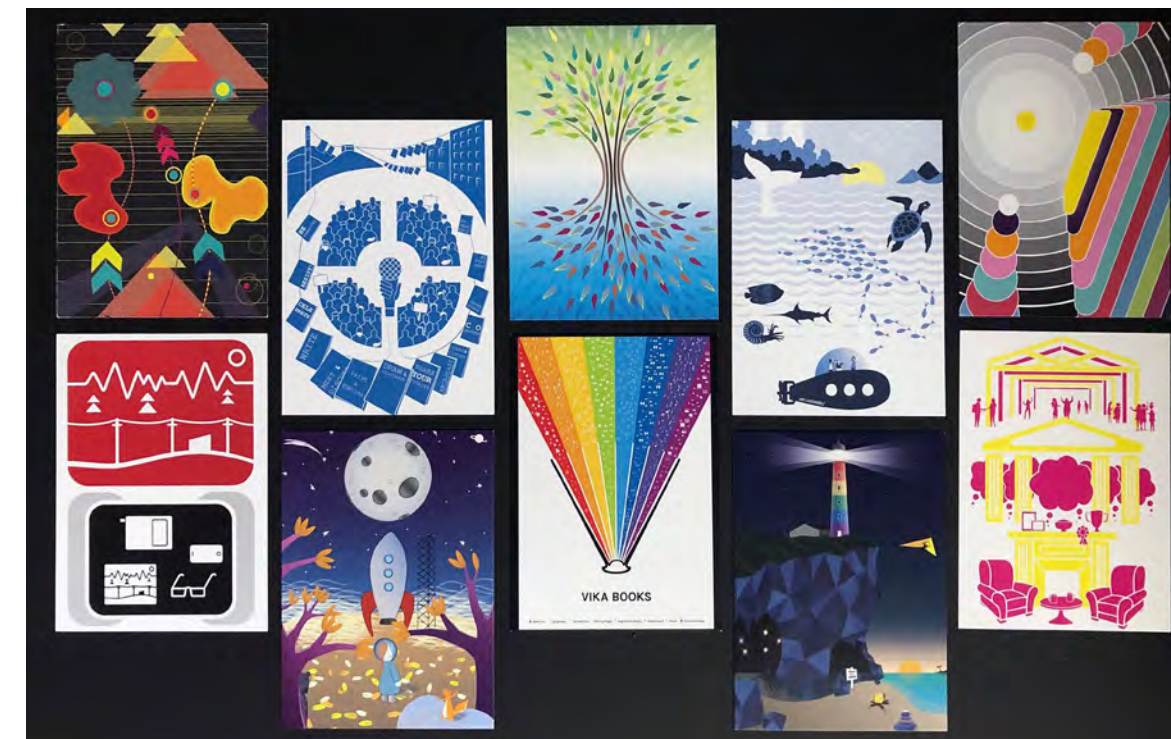
The many Forts and Castles of Argyll & the Isles are testament to the often turbulent story of the people who inhabited this beautiful and now peaceful landscape in Early Historic and Medieval times. The building of stone structures in Argyll & the Isles has a long tradition, beginning in the Iron Age around 800 BC.

There are more than 60 medieval castles and forts in Argyll & The Isles – some of which you can readily visit and explore, and others, which you cannot currently enter, but will still make exceptional backdrops for your travels and adventure and perfectly composed photos.

For a list of our majestic castles to visit, go to [wildaboutargyll.co.uk/castles](https://www.wildaboutargyll.co.uk/castles)

- **Castle Stalker**¹ near Appin - a private residence on Loch Linnhe
- **Dunstaffnage Castle**² north of Oban - normally open to the public but closed for now
- **Kilchurn Castle**³ a ruin on the banks of Loch Awe accessible to the public
- **Carnassarie Castle**⁴, Kilmartin Glen - a well preserved ruin accessible by foot
- **Skipness Castle**⁵ in Kintyre - a well preserved ruin accessible to the public
- **Inveraray Castle**⁶ the seat of the Dukes of Argyll built in the 18th century. Castle and Gardens open to the public. Entry fee.

Historic Environment Scotland manage many of the historic properties in Argyll. Find out more about access and opening times post Covid on www.historicenvironment.scot



The Culture, Heritage and Arts Assembly, Argyll and Isles (CHARTS), is proud to support the creative and cultural industries, across Argyll and Bute, to grow audiences and welcome visitors. As a membership-led charity we aim to build awareness of the vast array of talented people living in our region and profile the many places across the mainland and 23 islands, which make-up our cultural landscape.

Building futures and celebrating sense of place, current projects include, a Gaelic Arts Award Scheme in collaboration with Bòrd na Gàidhlig, to highlight both the Gaelic language and the heritage of St Columba; Colm-cille 1500

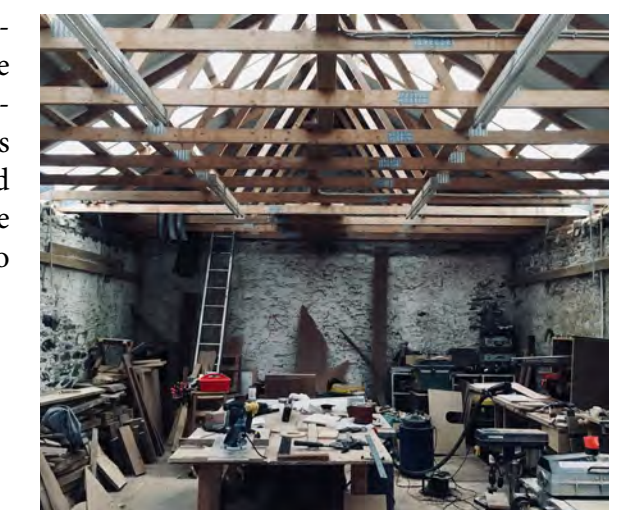
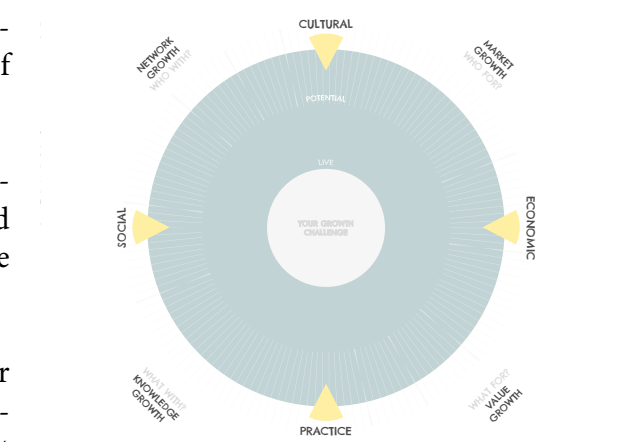
Working with The Glasgow School of Art's Innovation School, supported by Creative Scotland, we are exploring with our members what they and local places really need to survive and thrive. The 'Micro-Cluster Networks' project will identify and bring expert support to six local creative and cultural collaborations, or 'micro-clusters', to deliver projects for the places and communities they live and work in. As part of this process, one-to-one mentoring sessions are also being offered to creative practitioners and cultural enterprises that use visual mapping to reflect on the value their creative work provides, the network of relationships they work within and explore sustainable ways to grow.

**INNOVATION
SCHOOL
THE GLASGOW
SCHOOL OF ART**



CHARTS members make connections with like-minded others, across neighbourhoods and nation. CHARTS always welcomes new members and its free! To view Argyll and Bute's artists, heritage venues and cultural practitioners, and to support arts, culture and heritage in Argyll and Bute, go to www.chartsargyllandisles.org, visit us at <https://www.wildaboutargyll.co.uk/wander-argyll/> or call us on 01499 305055

See <https://www.chartsargyllandisles.org/opportunities/> for details on all opportunities available through CHARTS.



This initiative is one of several creative business support networks being developed across the country as a result of Creative Scotland's Create:Networks initiative.

Jessica Bonehill, Creative Industries Officer at Creative Scotland, said: "In these challenging times, it's more important than ever that support for creative businesses is tailored according to the needs of local sectors. These newly strengthened local networks will allow creative enterprises and practitioners to access specialist advice and support, and we hope this will prove valuable for creative businesses through the difficult months to come."



It's exactly 4 years since we embarked on our crazy Wild About Argyll adventure with Mark Beaumont – and what a journey since then. No-one could ever have predicted what we are dealing with now.

And if Mark taught us one thing between his 12 day epic adventure around Argyll in 2016 and then cycling around the world in 80 days in 2017 it is if you believe you can do it – you can. Planning means everything and being crystal clear on your goal – and then pushing yourself even further. There is a motto in there for sure that will guide us through our recovery and get us even more Wild About Argyll.

Mark Beaumont above Kileoran Bay on Colonsay during Wild About Argyll in 2016

WHERE TO NEXT?

There's even more on our doorstep if you go a few extra miles...

Argyll and the Isles is perfectly placed on the west coast to travel across the waters on an extended island adventure to the Outer Hebrides, or Clyde Islands such as Arran. Or you can stay on land and hop off on tour around all our neighbouring stunning destinations such as The Coig in Ayrshire and on the Clyde Coast, the Outdoor Capital of the UK - taking in the West Highland Peninsulas, Road to the Isles and wider Lochaber area, offering links over to the Small Isles, Skye and northwards up to Wester Ross.

With road links, water ways and short flights to and from Argyll to the rest of the west coast, you really can have it all, with day trips, short breaks, or that extended road trip you've always longed for!

Get inspired at westcoastwaters.co.uk



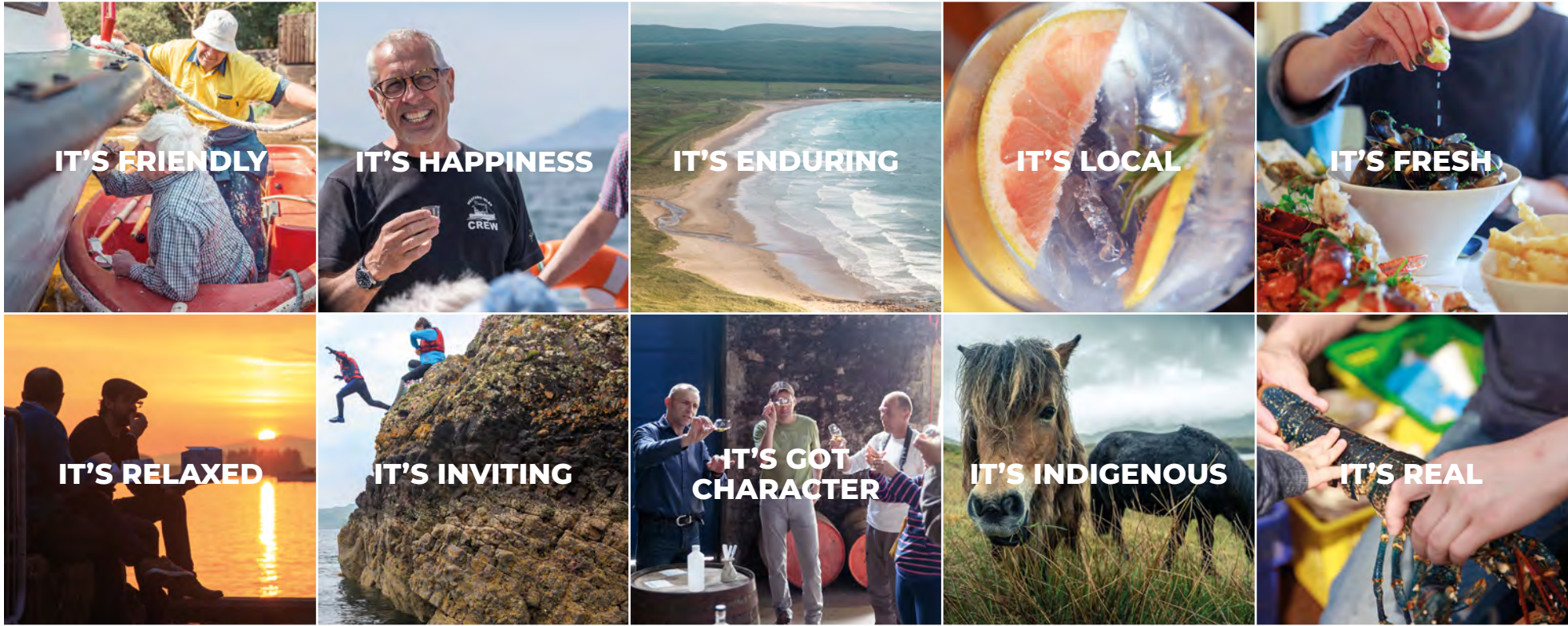


WHAT IS A WEST COAST WELCOME?

Travel the west coast of Scotland and immerse your senses in the sights, sounds, tastes, textures and aromas of our West Coast Waters.

Cladaichean An Iar Shores Of The West





westcoastwaters.co.uk

@WCWScotland

BEST DECISION EVER.

Make Lochaber your Outdoor Capital
Explore your Highland adventure now
by visiting us at outdoorcapital.co.uk

Glencoe | Fort William | Ardnamurchan | Arisaig
Mallaig | Glenfinnan | Spean Bridge | Invergarry



FROM SCOTLAND'S ADVENTURE COAST TO THE OUTDOOR CAPITAL OF THE UK

Outdoor Capital of the UK is perfectly positioned on the doorstep of Argyll where you can begin your Highland adventure. Would you like to find out some more about our stunning, magical and vast beauty that is home to blockbuster landscapes, silver sand beaches and the tallest peak in the United Kingdom? I'm glad we've captured your attention...

Lochaber is nestled in the Scottish Highlands and will welcome you with our vast skies, eye-filling landscapes, wild beauty, scrumptious food and a Highland welcome that will warm you.

The Outdoor Capital of the UK offers you a vast range of activities, locations and wild landscapes that allow you to tailor your adventure and trip to your needs, your interests, allowing you to connect to your very own Highland adventure bringing you mountains, waterfalls and those top 'Instagram-ready' viewpoints at almost every turn.

You have access to some of Scotland's most beautiful outdoors with a reputation for offering unique experiences and memories of a lifetime. With a host of highly experienced mountain guides, activity providers and instructors you will be in safe and capable hands during your activity.

Looking for something a little calmer?

We have a great spread of walks, cycle routes (oh, and plenty of bike hire) and landmarked paths providing you with the opportunity to relax, soak in the atmosphere and enjoy The Outdoor Capital of the UK at your own pace. You'll be sure to find a friendly face at the end of your journey. See you soon!

LOCHABER HIGHLIGHTS

- Release your inner wizard at Glenfinnan Viaduct
- Experience the highest peak when you summit Ben Nevis
- Be blown away by wild scenery and vast, rugged landscapes in Glencoe
- Want to race in a World Cup? Take the mountain bike downhill track at Nevis Range Mountain Resort
- Drink a locally distilled dram and experience Scotch single-malt from Ben Nevis Distillery
- Walk historic paths and soak in the scenery that was once the backdrop of major battles, movies and moments in time through Ardnamurchan Peninsula, Fort William and Glen Nevis
- Want to embrace your wild side? How about swimming an open-water loch or bathing in a river with your friends at Craig Falls, Spean Bridge
- Walk through silver sand and swim in stunning blue and crystal-clear waters of the Arisaig coastline
- We look forward to welcoming you when you take your adventure in Lochaber, The Outdoor Capital of the UK



Island & Wildlife Cruises Tea Room & Gift Shop

3-hour boat trips on Tuesdays, Fridays and Sundays, with departure times of 10am and 2.30pm.

The boat trips depart from Arisaig take in the beautiful scenery and marine wildlife that the west coast of Scotland has to offer.

BOOKING ESSENTIAL

THE BOAT HOUSE TEAROOM AND GIFT SHOP

A wide range of nautical gifts, jewellery, soaps, cards, walking guides & fishing tackle.

Booking Advisable
Departs daily at 10 am
MV Sheerwater runs Apr-Sept.



ARISAIG MARINE LTD

Arisaig Harbour, Inverness shire, PH39 4NH
Tel: (01687) 450224 | Email: info@arisaig.co.uk

THE GREEN WELLY STOP



more than you
can imagine...

A family business in its third generation - established 1965

Home made food,
great shopping, gifts
and fantastic scenery
- the perfect stop on
the road north and
west.



- Restaurant
- Snack Stop Café
- Goodies & Gifts
- TyndrumWhisky.com
- The Outdoor Store
- Filling Station
- Easy Parking
- Award winning toilets



OPENING HOURS

FILLING STATION:	April - Oct	Nov - March
Fuel, groceries, newspapers, pharmacy, household goods, camping, drinks, off sales, cash machine	7am - 10pm	8am - 9pm
GOOD FOOD:	April - Mid Oct	Mid Oct - March
Restaurant	8.30am - 5pm	8.30am - 4pm
Snack Stop Café	7am - 9pm	4pm - 9pm
FINE SHOPPING:	April - Mid Oct	Mid Oct - March
	8.30am - 7pm	8.30am - 5pm



The Green Welly Stop is on the A82 & A85 - the main road north & west, as well as halfway along the famous West Highland Way.

www.thegreenwellystop.co.uk www.tyndrumwhisky.com T: 01838 400 271

ragamuffin

beautiful clothes • knitwear • gifts
armadale • sleat • isle of skye
tel: 01471 844217
email ragamuffinskye@gmail.com
www.ragamuffinstore.com



SILVERSANDS TREKKING CENTRE

Shelagh Sharman - Owner
Glen Rowan Farm, Mallaig

07789 175 136
silversandstrekking@outlook.com



Western Isles Cruises Ltd

Call 01687 462 233

westernislescruises.co.uk

info@westernislescruises.co.uk

Please Check

Website for full details

Dogs Welcome.

Knoydart Ferry Service

from Mallaig to Inverie &
Tarbet on the Knoydart
Peninsula all year round.

MV Western Isles

1 Hour Wild Life Cruise, April to October, Daily.

Designed to schedule with Jacobite Steam Train

and ScotRail. Leaves Mallaig @ 12:45, 14:30 &

17:00. £13 per Adult, £6.00 Children 5-13

Under 5 go free



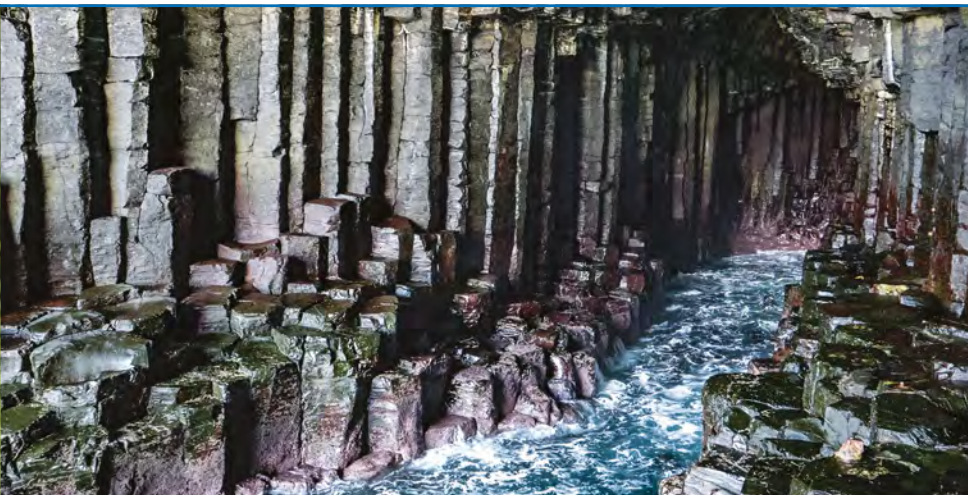
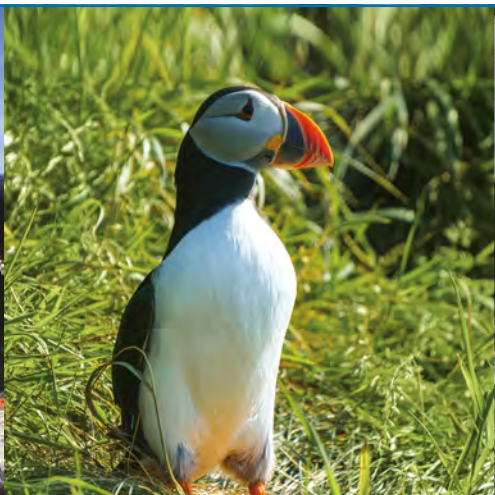
Cube E-Bike Hire

Explore the local area on the latest Cube
E-Bike technology.

Easy up hill, 45 km battery range, up to
24 kph.

Hire for 1 hour, half day, full day or week.
Please contact the office, or see website
for pricing & advice on local routes.





Get away from it all with Tiree Sea Tours

Get out on the water aboard the Aurora and go an island and wildlife packed adventure to see otters, basking sharks, whales, puffins and so much more! Create memories and captures moments of Scotland's most outstanding sandy coastlines and diverse isles.

Tiree Sea Tours gives the full experience with boat trips, car hire, gift shop and the world's first seafood vending machine, 'Tiree Lobster & Crab'! All this located next to Tiree Airport, perfect to fly in for a day trip from Glasgow daily.

Boat trip options

- Skerryvore Lighthouse
- Lunga & the Treshnish Isles
- The Isle of Staffa & Fingal's Cave
- The Isle of Iona
- The Isle of Coll (lunch/dinner)
- Your own Private Charter Service

Chat to us to plan & book your trip
07765 422831
info@tireeseatours.com
tireeseatours.com

Booking Office/Gift Shop, Tiree Airport, Isle of Tiree, PA77 6UW

Gift Shop,
Car Hire &
Boat Tours!

Tiree
Sea Tours